



RESEARCH

Open Access

Human enteroendocrine cell responses to infection with *Chlamydia trachomatis*: a microarray study

Aldona Dlugosz^{1*}, Sandra Muschiol², Katherina Zakikhany³, Ghazaleh Assadi⁴, Mauro D'Amato⁴ and Greger Lindberg¹

Abstract

Background: Enteroendocrine cells (EEC) are highly specialized cells producing signalling molecules vital to the normal functions of the gut. Recently, we showed altered protein distribution in *Chlamydia* infected EEC *in vitro*. The aim of this study was to perform a microarray analysis of the response pattern of EEC from both large and small bowel to infection *in vitro*, using *Chlamydia trachomatis* infection as a model.

Methods: Two human EEC lines: LCC-18, derived from a neuroendocrine colonic tumour, and CNDT-2, derived from a small intestinal carcinoid, were infected using cultured *C. trachomatis* serovar LGV II strain 434 (ATCC VR-902B). Penicillin G was used to induce persistent infection. We used microarray analysis (Affymetrix GeneChip®) for studying changes in gene expression at different stages of infection.

Results: Twenty-four hours after active and persistent infection, 66 and 411 genes in LCC-18 and 68 and 170 genes in CNDT-2 cells, respectively showed mean expression ratios >2-fold compared to non-infected cells. These genes encoded factors regulating apoptosis, cell differentiation, transcription regulation, cytokine activity, amine biosynthesis and vesicular transport. We found significant differences in gene transcription levels between persistently infected and non-infected cells in 10 genes coding for different solute carrier transporters (SLC) and in 5 genes related to endocrine function (*GABARAPL1*, *GRIP1*, *DRD2*, *SYT5* and *SYT7*).

Conclusions: Infected EEC cells exhibit cell-type specific patterns related to vesicular transport, secretion and neurotransmitters. EEC play a pivotal role in regulation of gut motility and an impairment of enteroendocrine function can contribute to motility disorders.

Keywords: Enteroendocrine cells, *Chlamydia trachomatis*, Infection, Microarray

Background

Enteroendocrine cells (EEC) are present in the gastrointestinal (GI) tract (mucosa of the stomach, small intestine, colon, and rectum) and are highly specialized cells that produce hormones and other signalling substances that are vital to the normal function of the gut. Due to their diffuse localisation, EEC are difficult to study and so far, their role in the pathogenesis of bowel disorders has been only little explored. EEC play a pivotal role in

sensory signalling for the enteric reflex regulating intestinal propulsive motility, secretion, and visceral hyperalgesia [1]. Alteration of endocrine cell function, particularly in the context of serotonin (5-HT), has been shown to be associated in a number of GI diseases including inflammatory bowel disease (IBD), coeliac disease and irritable bowel syndrome (IBS) [2-4]. The association between alterations in the production of gut hormones from EEC and various GI diseases emphasizes the significance of these cells in intestinal homeostasis.

EEC can be activated by bacterial ligands like lipopolysaccharide LPS [5] and may play a role in immune activation and in the regulation of gut inflammation. Altered endocrine function of the gut accompanies an inflammatory

* Correspondence: aldona.dlugosz@karolinska.se

¹Karolinska Institutet, Department of Medicine, Division of Gastroenterology and Hepatology, Karolinska University Hospital, Gastrocentrum Huddinge K63, Stockholm, Sweden

Full list of author information is available at the end of the article

immune response [6]. Recently, our group found altered serotonin and chromogranin-A distribution in EEC infected with *Chlamydia trachomatis* [7]. In line with the microscopical findings, we found a significant down-regulation of the gene coding for the vesicular monoamine transporter (VMAT1) in infected compared with non-infected EEC ($P < 0.05$). Bacteria of the genus *Chlamydia* are gram-negative, obligate intracellular pathogens that can infect a wide range of eukaryotic cells and cause chronic and acute diseases in humans and animals. All *Chlamydia* species share a common biphasic developmental cycle in which the organism alternates between two developmental forms, the elementary body (EB), the infectious form of the organism and the reticulate body (RB), the metabolically active but non-infectious form of the bacterium. Upon attachment and internalization, EBs differentiate into RBs, that multiply inside a membrane-bound vacuole termed inclusion.

RBs eventually differentiate back into EBs, which upon their exit from the host cell can start a new round of infection. In addition to such acute chlamydial infection, *Chlamydia* can persist within infected host cells, a condition that has been associated with a number of chronic diseases. Chlamydial persistence has been described as a viable but non-cultivable growth stage resulting in a long-term relationship with the infected host cell. Such relationships can be established *in vitro* through exposure to antibiotics [8].

The aim of this study was to evaluate the response pattern of enteroendocrine cells to intracellular bacteria *in vitro* using microarray technology. Based on previous results from our laboratory we used *C. trachomatis* as the infectious agent for studying gene expression alterations upon bacterial infection of EEC (2). Analysis of genome-wide expression patterns on the host during infection

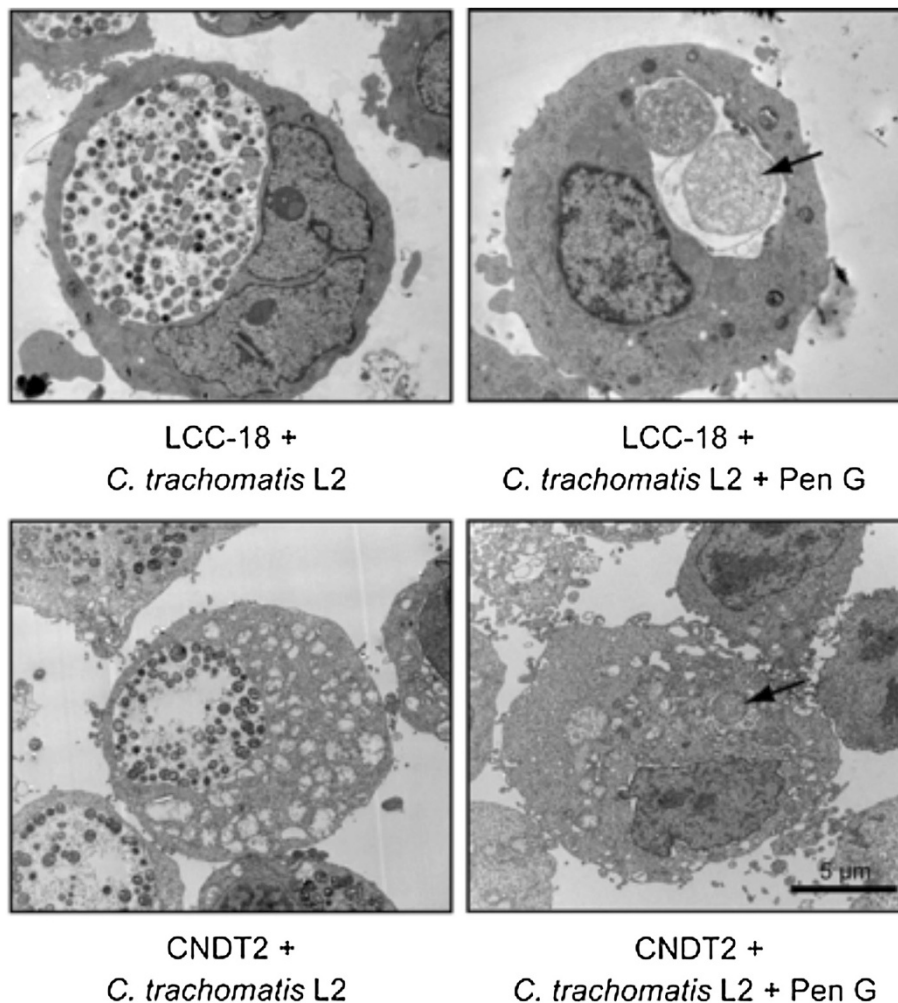


Figure 1 LCC-18 and CNDT-2 cells actively and persistently infected with *Chlamydia trachomatis* L2. Growth of *C. trachomatis*, manifested through inclusions containing both elementary bodies (EB) and reticulate bodies (RB) at 24 h post infection (p.i.), could be observed in both cell lines. In EEC treated with penicillin G enlarged, aberrant bacteria (arrows) reminiscent of persistent growth forms can be seen.

provides an insight into how the host recognizes and process a pathogen [9]. We assessed transcription profiles of EEC lines from both the large bowel and the small bowel after infection with *C. trachomatis*.

Results

With TEM we confirmed active and persistent infection caused by *C. trachomatis* in enteroendocrine cells, originating from both large and small bowel. As shown in Figure 1, growth of *C. trachomatis*, manifested through inclusions containing both elementary bodies (EB) and reticulate bodies (RB) at 24 h post infection (p.i.), could be observed for both cell lines. When EECs were treated with penG we observed enlarged, aberrant bacteria reminiscent of persistent growth forms.

In order to screen host-cell gene regulation in response to *C. trachomatis* infection we used microarrays representing 30 000 human genes. We studied gene changes (up or down regulation) at the same time point (24 h post infection) in both active and persistent infection. The time point at 24 h was chosen as it represents a period of active metabolism and binary fission of *C. trachomatis* reticulate bodies within the host cell.

Cell line specific responses to *C. trachomatis* active and persistent infection

We identified 66 differentially transcribed genes or expressed sequence tags (ESTs) (61 up-regulated) in LCC-18 cells with active *C. trachomatis* infection compared to non-infected cells and 411 (108 up-regulated) in persistently infected LCC-18 cells compared to non-infected cells. Twelve differentially transcribed genes (11 up-regulated) were identical for both active and persistent infection of LCC-18 cells. In order to identify different gene clusters among differentially transcribed genes we employed the DAVID Functional Annotation Tool. Based on this analysis four main clusters encoding genes involved in apoptosis GO:0006915, transcription regulation activity GO:0045449, vesicle mediated transport GO:0016192 and group of genes intrinsic to membrane GO:0031224 were identified.

In CNDT-2 cells, we identified 68 differentially transcribed genes or expressed sequence tags (ESTs) when infected with *C. trachomatis* (58 up-regulated) and respectively 170 differentially transcribed genes or ESTs (120 up-regulated) in persistently infected CNDT-2 cells compared to non infected cells. Thirty-nine differentially transcribed genes (all up-regulated) were identical for both active and persistent infection of CNDT-2 cells. Genes were grouped in 8 clusters (amine biosynthesis GO:0009309, apoptosis GO:0006915, intracellular organelle lumen GO:0070013, plasma membrane GO:0005886, ion-binding GO:0043167, transcription regulator activity GO:0045449,

intracellular non-membrane-bounded organelle GO:0043232, amino-acid transporter activity GO:0015171) (Figure 2).

Tables 1, 2, 3 and 4 show the most prominent differentially transcribed genes in the two cell lines. The presented genes are up or down-regulated by >3 fold in studied cell lines.

Gene signatures of active and persistent *C. trachomatis* infection

Host responses to infection in the two cell lines during active chlamydial infection were similar. Only 8 differentially transcribed genes (6 up-regulated) were the same for both CNDT-2 and LCC-18 cell lines. Differentially transcribed gene clusters comprised genes involved in apoptosis GO:00006915, negative regulation of cell communication GO:0010648, ion binding GO:0043167, cellular protein catabolic process GO:0005886, cell cycle GO:0007048, membrane enclosed lumen GO:0031974, cytokine activity GO:0005125, and vesicle mediated transport GO:0016192.

In persistent infection we found 44 differentially transcribed genes (18 up-regulated and 26 down-regulated) in both CNDT-2 and LCC-18 cells. Among them were genes involved in apoptosis GO:0006915, cytokine activity GO:0005125, growth factor activity GO:0008083, cell cycle GO:0007049, DNA metabolic process GO:0006259, intracellular organelle lumen GO:0070013, amine biosynthesis GO:0009309, transcription regulation activity GO:0045449, cell-cell signalling GO:0007267, regulation of phosphorylation GO:0042325, ion binding GO:0043167, and plasma membrane GO:0005886 (Figure 2). The remaining differentially transcribed genes in persistent infection were involved in immune response GO:0006955, vesicle lumen GO:0031983, cytoplasmic vesicle GO:0031410, vesicle mediated transport GO:0016192, intrinsic to membrane GO:0031224 and regulation of cell motion GO:0051270 (Figure 2).

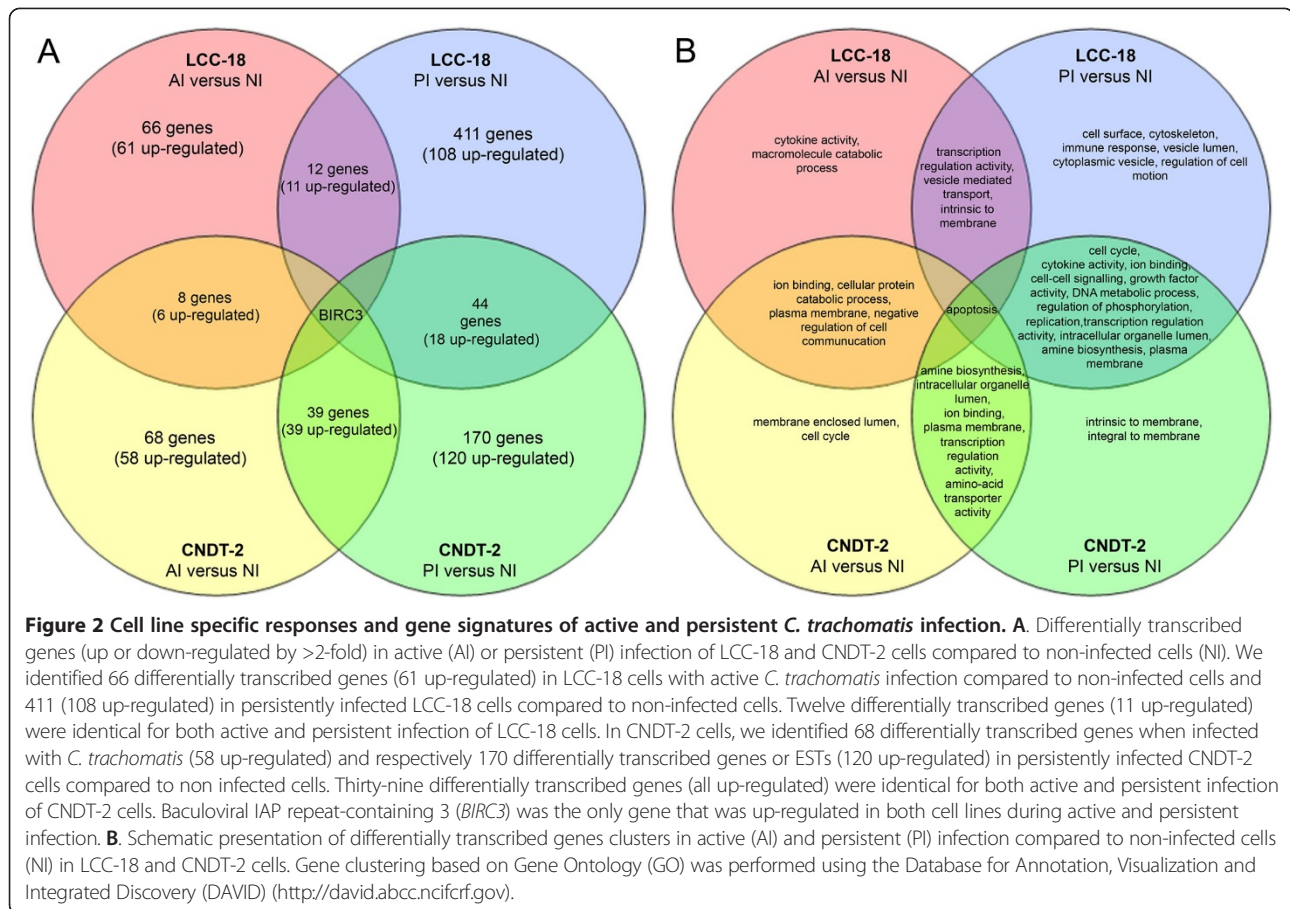
Baculoviral IAP repeat-containing 3 (*BIRC3*) was the only gene that was up-regulated in both cell lines during active and persistent infection.

Selected genes of interest

Grouping of particular genes into specific functional classes is arbitrary to a certain degree, because some genes may be involved in several cellular functions and pathways. In order to study cell type-specific responses to infection, we analyzed the expression of genes associated with transport and endocrine function.

We found significant differences in the gene transcription levels between persistently infected and non-infected cells of 10 genes coding for different solute carrier transporters (SLC) (Table 5).

We also found significant differences in the expression of genes related to glutamate transport and synthesis: *SLC1A4*,



SLC7A11, argininosuccinate synthetase 1 (*ASS1*) and glutamate receptor interacting protein 1 (*GRIP1*) were up-regulated in persistently infected cells compared to non-infected cells. We identified 5 genes related to endocrine function that were differentially transcribed in persistent infection compared to non-infected cells but we found differences between studied cell lines. *GABARAPL1* and *SYT5* were up-regulated in both cell lines whereas *GRIP1*, *DRD2*, and *SYT7* were differentially transcribed only in LCC-18 cells (Table 6).

Although many similarities were found between the two cell lines we also found many differences in the response to infection. Some of these could be due to differences in basal gene transcription between the two studied cell lines. For example, basal expressions of receptors for gamma-aminobutyric acid: (GABA)A receptor, alpha 1 (*GABRA1*), (GABA)A receptor, alpha 3 (*GABRA3*), (GABA)A receptor, beta 2 (*GABRB2*) and (GABA)B receptor 1 (*GABBR1*) were significantly lower in CNDT-2 than in LCC-18, whereas (GABA)A receptor-associated protein like 1 (*GABARAPL1*) expression was lower in LCC-18 cells (data available at <http://www.ncbi.nlm.nih.gov/geo/query/acc.cgi?acc=GSE58151>).

Confirmation using qPCR

The changes in expression of selected genes were validated by qPCR (Table 5). This process validated 10 genes coding for different solute carrier transporters (*SLC1A4*, *SLC5A3*, *SLC7A5*, *SLC7A11*, *SLC16A6*, *SLC25A10*, *SLC25A35*, *SLC35D2*, *SLC38A4*, *SLC41A2*). The changes in the expression levels of the validated genes between persistently infected and non-infected cells were paralleled in microarray and qPCR experiments in both cell lines.

Discussion

Several studies have described *Chlamydia*-induced transcriptome changes in epithelial cells [10-12]. Our study is the first to describe such changes in enteroendocrine cells. Studying EEC response to infection seems to be very important since the adult human intestine is home to between 1000 and 1150 prevalent bacterial species [13]. The role of EEC in immune activation and promotion of inflammation in the gut has been postulated before [14-16]. A recent study showed that regenerating islet-derived gene *REG4* coding for protein associated with epithelial inflammation was expressed in serotonin-

Table 1 Differentially transcribed host genes up or down-regulated by >3-fold at 24 h after *C. trachomatis* infection of CNDT-2 cells compared to non-infected

Affymetrix ID	Gene name	Gene symbol	Log2 fold change	Absolute fold change
8102800	Solute carrier family 7, (cationic amino acid transporter, y + system) member 11	SLC7A11	3,50	11,28
8154381	Chromosome 9 open reading frame 150	C9orf150	3,25	9,51
7982868	ChaC, cation transport regulator homolog 1 (E. coli)	CHAC1	2,63	6,18
7928308	DNA-damage-inducible transcript 4	DDIT4	2,41	5,33
7902290	Hystathionase (cystathionine gamma-lyase)	CTH	1,89	3,72
8178086	Heat shock 70 kDa protein 1A /// heat shock 70 kDa protein 1B	HSPA1A /// HSPA1B	-1,78	3,43
8179324				
8118314				
8179322				
8118310				
8166585	Hypothetical locus FLJ32742	FLJ32742	1,77	3,41
7920873	Small nucleolar RNA, H/ACA box 42	SNORA42	1,74	3,35
7899436	Sestrin 2	SESN2	1,66	3,17
8139737	Phosphoserine phosphatase	PSPH	1,66	3,17
8060344	Tribbles homolog 3 (Drosophila)	TRIB3	1,62	3,08
8122724	UL16 binding protein 1	ULBP1	1,61	3,06
8143341	Jumonji C domain containing histone demethylase 1 homolog D (S. cerevisiae)	JHDM1D	1,61	3,06
8084219	Kelch-like 24 (Drosophila)	KLHL24	1,59	3,03

Presented genes are involved in cellular amino-acid biosynthesis, stress response, carboxylic and organic acid biosynthetic process, amine biosynthetic process. Gene clustering based on Gene Ontology identified two clusters: apoptosis and ion binding.

producing enteroendocrine cells and expanded to epithelial cells of the upper colonic crypts during inflammation [17]. Alterations in the number of EEC have been observed in response to different bacterial, viral and parasitic infections of the GI tract [18,19] but the impact of a bacterial infection on EEC themselves has never been studied. Previous studies on *Chlamydia* infection of epithelial cells showed alterations in genes encoding apoptosis inhibitors, regulators of cell differentiation, components of the cytoskeleton, transcription factors, proinflammatory cytokines and cellular growth factors and cell cycle [18,20,21]. Our results showed that the impact of *Chlamydia* infection on apoptosis (*BIRC3*,

EMP1, *CHAC1*), immune response, host cell structure and cell cycle in EEC is similar to what has been observed in epithelial cells [21,22].

The expression of *BIRC3* (also known as *cIAP2* or *HIAP*) [23], an apoptotic suppressor, was up-regulated in both cell lines during active and persistent infection. *BIRC3* is a component of the tumour necrosis factor receptor 2 (TNFR2) complex and, therefore, is a constituent of the TNF alpha (TNF α) signalling pathway [24]. *BIRC3* has been demonstrated to inhibit cell death by directly repressing the proapoptotic activity of a family of cysteine proteases, caspases, as well as targeting proapoptotic components of the TNF α signalling pathway for

Table 2 Differentially transcribed host genes up or down-regulated by >3-fold at 24 h after *C. trachomatis* infection of LCC-18 cells compared to non-infected

Affymetrix ID	Gene name	Gene symbol	Log2 fold change	Absolute fold change
7943413	Baculoviral IAP repeat-containing 3	BIRC3	2,14	4,41
8124650	Ubiquitin D /// gamma-aminobutyric acid (GABA) B receptor, 1	UBD /// GABBR1	2,00	4,00
8178295				
7954090	Epithelial membrane protein 1	EMP1	1,96	3,90
8122265	Tumor necrosis factor, alpha-induced protein 3	TNFAIP3	1,95	3,87
7984259	RNA, U5B small nuclear 1	RNU5B-1	1,72	3,29
7908072	Laminin, gamma 2	LAMC2	1,65	3,13

Gene clustering based on Gene Ontology identified two clusters: apoptosis and cellular protein catabolic process.

Table 3 Differentially transcribed host genes up or down-regulated by >3-fold at 24 h after *C. trachomatis* persistent infection of CNDT-2 cells compared to non-infected

Affymetrix ID	Gene name	Gene symbol	Log2 fold change	Absolute fold change
8102800	Solute carrier family 7, (cationic amino acid transporter, y + system) member 11	SLC7A11	3,77	13,56
7982868	ChaC, cation transport regulator homolog 1 (E. coli)	CHAC1	3,28	9,71
7928308	DNA-damage-inducible transcript 4	DDIT4	2,47	5,55
8146934	Lymphocyte antigen 96	LY96	2,09	4,26
8154381	Chromosome 9 open reading frame 150	C9orf150	1,96	3,89
8143341	Jumonji C domain containing histone demethylase 1 homolog D (S. cerevisiae)	JHDM1D	1,93	3,81
8122724	UL16 binding protein 1	ULBP1	1,85	3,61
8174361	TSC22 domain family, member 3	TSC22D3	1,75	3,36
8122202	v-myb myeloblastosis viral oncogene homolog (avian)	MYB	-1,73	3,31
7912157	ERBB receptor feedback inhibitor 1	ERRFI1	1,71	3,27
8156043	Phosphoserine aminotransferase 1	PSAT1	1,71	3,27
8139737	Phosphoserine phosphatase	PSPH	1,70	3,26
7899436	Sestrin 2	SESN2	1,65	3,14
7902290	Cystathionase (cystathionine gamma-lyase)	CTH	1,59	3,02
8049542	Leucine rich repeat (in FLII) interacting protein 1	LRRFIP1	1,59	3,00

Gene clustering based on Gene Ontology identified five clusters: amine biosynthesis, apoptosis, transcription regulator activity, intrinsic to membrane and ion binding.

ubiquitin degradation [25]. It was suggested that infection with *Chlamydia* protects mammalian host cells against apoptosis via BIRC3 up-regulation [26,27]. Inhibition of apoptosis and cytoskeleton modifications possibly accommodate chlamydial growth [9].

The ability of *Chlamydiae* to alter host cell proliferation and differentiation was manifested by up-regulation of growth factors: growth differentiation factor 15 (*GDF15*), vascular endothelial growth factor A (*VEGFA*), amphiregulin (*AREG*) and transforming growth factor beta 2 (*TGFB2*). *GDF15* was the most up-regulated gene in persistently infected LCC-18 cells (>10 fold change). *GDF15* is a member of the TGFβ family with a capacity to inhibit LPS-induced macrophage activation. *GDF15* also provide significant neuroprotection with prominent effects on dopaminergic and serotonergic neurons [28].

The innate response upon *Chlamydia* infection of EEC is mediated by Toll-like receptor 4 (*TLR4*). *TLR4* was up-regulated in LCC-18 and lymphocyte antigen 96 (*LY96*) was up-regulated in CNDT-2. *LY96* encodes a protein, which associates with TLR 4 on the cell surface and confers responsiveness to LPS, thus providing a link between the receptor and LPS signalling.

Besides similarities in host-pathogen interaction between EEC and epithelial cells we found changes in gene expression in EEC that have never been described in epithelial cells. We found significant differences in gene transcription between persistently infected and non-infected cells in 10 genes coding for different solute carrier

transporters (SLC) (Table 5). Transporters are the gatekeepers for all cells and organelles, controlling uptake and efflux of crucial compounds such as sugars, amino acids, nucleotides, inorganic ions and drugs. The SLC family include genes encoding passive transporters, ion coupled transporters and exchangers [29]. The biggest expression change was found for *SLC7A11* in CNDT-2 cells (>13-fold). *SLC7A11* is responsible for a sodium-independent, high-affinity exchange of anionic amino acids with high specificity for anionic forms of cysteine and glutamate. Up-regulation of *SLC7A11* was previously reported in small bowel mucosa during cholera infection [30].

In addition to up-regulation of genes coding for two transporters involved in glutamate transport (*SLC7A11* and *SLC1A4*) we also found significant differences in the expression of other genes related to glutamate signalling (argininosuccinate synthetase 1 (*ASS1*) and glutamate receptor interacting protein 1 (*GRIP 1*)) in persistently infected LCC-18 cells compared to non-infected cells. GABAA receptor-associated protein like 1 (*GABARAPL1*) was up-regulated during persistent infection in both cell lines. Glutamate and GABA (γ-aminobutyric acid) are the major neurotransmitters acting on specific G-protein-coupled receptors (the metabotropic glutamate (mGlu) and GABAB receptors) to modulate synaptic transport.

EEC provide an important link in transfer of information between gut and brain. Primary afferent neurons are excited indirectly by serotonin or hormones released from EEC. Sensory information from the gastrointestinal

Table 4 Differentially transcribed host genes up or down-regulated by >3-fold at 24 h after *C. trachomatis* persistent infection of LCC-18 cells compared to non-infected

Affymetrix ID	Gene name	Gene symbol	Log2 fold change	Absolute fold change
8027002	Growth differentiation factor 15	GDF15	3,32	10,01
7958262	t-complex 11 (mouse)-like 2	TCP11L2	2,96	7,79
7954090	Epithelial membrane protein 1	EMP1	2,59	6,03
8158671	Argininosuccinate synthetase 1	ASS1	2,10	4,29
8152703	F-box protein 32	FBXO32	2,09	4,25
7982868	ChaC, cation transport regulator homolog 1 (E. coli)	CHAC1	2,09	4,25
8048319	Villin 1	VIL1	-2,04	4,10
8066431	Adenosine deaminase	ADA	-2,00	3,99
8008885	microRNA 21	MIR21	1,99	3,96
8034122	SPC24, NDC80 kinetochore complex component, homolog (S. cerevisiae)	SPC24	-1,96	3,89
8119898	Vascular endothelial growth factor A	VEGFA	1,91	3,77
8117429	Histone cluster 1, H2bi	HIST1H2BI	-1,88	3,69
7919591	Family with sequence similarity 72, member D /// family with sequence similarity 72,	FAM72D / FAM72A / FAM72B / FAM72C	-1,84	3,60
8122724	UL16 binding protein 1	ULBP1	1,81	3,49
8007071	Cell division cycle 6 homolog (S. cerevisiae)	CDC6	-1,80	3,49
8113073	Arrestin domain containing 3	ARRDC3	1,79	3,45
8068684	Family with sequence similarity 3, member B	FAM3B	-1,76	3,40
7989146	Meiosis-specific nuclear structural 1	MNS1	-1,70	3,24
8109712	Hyaluronan-mediated motility receptor (RHAMM)	HMMR	-1,68	3,20
8113278	Lix1 homolog (chicken)	LIX1	-1,66	3,15
7953943	GABA(A) receptor-associated protein like 1	GABARAPL1	1,65	3,15
8071212	CDC45 cell division cycle 45-like (S. cerevisiae)	CDC45L	-1,65	3,14
8009243	Chromosome 17 open reading frame 60	C17orf60	1,65	3,13
8062064	Myosin, heavy chain 7B, cardiac muscle, beta	MYH7B	-1,64	3,11
8021470	Phorbol-12-myristate-13-acetate-induced protein 1	PMAIP1	1,62	3,08
8095744	Amphiregulin	AREG	1,62	3,08
7989647	KIAA0101 /// casein kinase 1, gamma 1	KIAA0101 /// CSNK1G1	-1,61	3,06
7914878	Arsenic transactivated protein 1	LOC100289612	-1,61	3,05
8165663	Glycerol-3-phosphate acyltransferase, mitochondrial	GPAM	-1,60	3,04
8077731	Fanconi anemia, complementation group D2	FANCD2	-1,59	3,03
8151871	Cyclin E2	CCNE2	-1,59	3,03
8157524	Toll-like receptor 4	TLR4	1,59	3,03
8104234	Thyroid hormone receptor interactor 13	TRIP13	-1,59	3,01

Gene clustering based on Gene Ontology identified ten clusters: cell cycle, cell surface, regulation of apoptosis, organelle lumen, cytoskeleton, immune response, regulation of phosphorylation, cytokine activity, intrinsic to membrane and ion binding.

tract is transmitted via a glutamatergic synapse to neurons of the nucleus tractus solitarius, which integrate this sensory information to regulate autonomic functions and homeostasis. The integrated response is conveyed to the preganglionic neurons of the dorsal motor nucleus of the vagus using mainly GABA, glutamate and catecholamines as neurotransmitters [31]. Glutamate is involved in the regulation of gut motility and secretion by acting as an

excitatory neurotransmitter in the gut [32]. Changes in glutamate related gene expression could be beneficial to *Chlamydia*. It was shown that glutamate could support chlamydial growth [33]. Ojcius et al. [34] demonstrated the stimulation of glutamate synthesis in cells infected with *Chlamydia psittaci*.

Genes associated with glutamate transport (*SLC7A11*, *SLCIA4*) were up-regulated in CNDT-2 cells and *ASS1*,

Table 5 Differentially transcribed genes coding for solute carrier families (SLC), up or down-regulated at 24 h after *C. trachomatis* persistent infection of CNDT-2 and LCC-18 cells compared to non-infected

Affymetrix ID	Gene name	Gene symbol	Log2 fold change	Absolute fold change	Log2 fold change	Absolute fold change
			LCC-18	LCC-18	CNDT-2	CNDT-2
			PI v NI	PI v NI	PI v NI	PI v NI
			Microarray/ qPCR	Microarray/ qPCR	Microarray/ qPCR	Microarray/ qPCR
8042310	Solute carrier family 1 (glutamate/neutral amino acid transporter), member 4	SLC1A4	NC	NC	1,37	2,58
			0,94	1,9	1,12	2,2
8068361	Solute carrier family 5 (sodium/myo-inositol cotransporter), member 3	SLC5A3	1,2	2,3	NC	NC
			1,28	2,4	0,18	1,1
8003298	Solute carrier family 7 (cationic amino acid transporter, y + system), member 5	SLC7A5	NC	NC	1,26	2,4
			-0,6	1,4	0,48	1,4
8102800	Solute carrier family 7, (cationic amino acid transporter, y + system) member 11	SLC7A11	0,84	1,8	3,76	13,6
			1,63	3,1	1,55	2,9
8017843	Solute carrier family 16, member 6 (monocarboxylic acid transporter 7)	SLC16A6	1,26	2,4	0,88	1,8
			0,68	1,6	1,67	3,2
8010673	Solute carrier family 25 (mitochondrial carrier; dicarboxylate transporter), member 10	SLC25A10	-0,79	1,7	-1,07	2,1
			-0,11	1,1	-1,49	2,5
8012450	Solute carrier family 25, member 35	SLC25A35	-0,96	2	-0,43	1,4
			-0,49	1,4	-0,79	1,7
8162586	Solute carrier family 35, member D2 UDP-N-acetylglucosamine/UDP-glucose/GDP-mannose transporter	SLC35D2	0,96	2	0,57	1,5
			0,74	1,7	0,8	1,7
7962559	Solute carrier family 38, member 4, Na(+)-coupled neutral amino acid transporter	SLC38A4	1,48	2,8	-1,1	2,2
			0,92	1,9	-0,56	1,4
7965964	Solute carrier family 41, member 2, plasma-membrane magnesium transporter	SLC41A2	0,4	1,3	1,18	2,3
			0,45	1,4	1,62	3,1

A fold change > 2 was observed in at least one comparison. Microarray results and validation of candidate genes using qPCR. PI = persistent infection, NI = non-infected cells. Log2 fold change "-" = down-regulated, "+" = up-regulated. NC = no change.

Table 6 Differentially transcribed genes related to EEC function, up or down-regulated at 24 h after *C. trachomatis* persistent infection of CNDT-2 and LCC-18 cells compared to non-infected

Affymetrix ID	Gene name	Gene symbol	Log2 fold change	Absolute fold change	Log2 fold change	Absolute fold change
			LCC-18	LCC-18	CNDT-2	CNDT-2
			PI v NI	PI v NI	PI v NI	PI v NI
			PI v NI	PI v NI	PI v NI	PI v NI
7953943	GABA(A) receptor-associated protein like 1	GABARAPL	1,65	3,2	1,10	2,0
7964759	glutamate receptor interacting protein 1	GRIP1	1,14	2,2	NC	NC
7951703	Dopamine receptor 2	DRD2	1,02	2,0	NC	NC
8039378	Synaptotagmin5	SYT5	1,3	2,5	0,54	1,5
7948588	Synaptotagmin7	SYT7	-1,15	2,1	NC	NC

A fold change >2 was observed in at least one comparison. PI = persistent infection, NI = non-infected cells. Log2 fold change "-" = down-regulated, "+" = up-regulated. NC = no change.

which is involved in glutamate synthesis [35] and *GRIP1* were up-regulated in LCC-18 cells. *GRIP1* is a synaptic protein interacting with glutamate receptors, playing an important role in their trafficking, synaptic targeting and recycling. *GABARAP* involves *GRIP1* in the regulation of GABAA receptor function at inhibitory synapses [36].

GABA acts through a paracrine or autocrine mechanism via GABAA receptor activation [37]. This agent may play a similar role as a signalling molecule in endocrine organs and can for example inhibit the serotonin secretion [38]. The role of *GABARAP* binding proteins is not restricted to GABAA receptor transport but they participate in multiple biological processes, such as general vesicular transport and fusion events, autophagy and apoptosis. *GABARAP* appears to be associated with transport vesicles rather than the cell surface [39].

DRD2 gene, encodes the D2 subtype of the dopamine receptor (another G-protein-coupled receptor), was up-regulated in persistent infection in LCC-18 cells. Dopamine (DA) is an enteric neurotransmitter and D2 seems to be an important mediator of neuronal responses to DA. Li et al. [40] showed that propulsive motility is increased in the gut of mice that lack D2 receptors suggesting that D2 is a major mediator of the effects of endogenous DA in the enteric nervous system (ENS).

Synaptotagmins *SYT5* and *SYT7* are other endocrine related genes that were differentially transcribed in persistent infection of LCC-18. Neurotransmitters, neuropeptides and hormones are released through the regulated exocytosis of SVs (synaptic vesicles) and LDCVs (large dense-core vesicles), a process that is controlled by calcium [41]. Ca^{2+} triggers many forms of exocytosis in different types of eukaryotic cells, for example synaptic vesicle exocytosis in neurons, granule exocytosis in mast cells, and hormone exocytosis in endocrine cells [42]. Synaptotagmins are a family of type-1-membrane proteins that share a common domain structure. Most synaptotagmins are located in brain and endocrine cells, and some of these synaptotagmins bind to phospholipids and calcium at levels that trigger regulated exocytosis of SVs and LDCVs [41]. Synaptotagmin 5 is a neuroendocrine cell-specific synaptotagmin responsible for phospholipid binding. Synaptotagmin 7 is a major Ca^{2+} -sensor in endocrine LDCV exocytosis [42].

Our study provides new insights into the molecular events taking place in *Chlamydia* infection of EEC. We found that *Chlamydia* infected EEC may share some gene expression patterns with infected epithelial cells but they also seem to have some cell type-specific patterns related to vesicular transport and secretion, and neurotransmitters. We also observed differences in gene expression changes caused by *Chlamydia* infection between our two cell lines. It is well known that there are important differences in the luminal environments between the small and

large intestines and we cannot exclude the influence of cell origins on obtained results. We found many differences in basal gene transcriptions (non-infected cells) between the two cell lines but infected cells seem to share the same genetic pattern independent of their origin.

Given the functions of EEC, it can be anticipated that altered function, in the presence of disease, might underpin symptom development. EEC clearly have multiple important functions in the control of appetite, GI motility and mucosal immunity. At present, EEC dysfunction related to various GI diseases is acknowledged, but remains poorly understood [43].

We do not have evidence that *Chlamydia* is the causative agent for motility disorders but we have shown that such an infection can influence EEC function. We studied the response pattern of enteroendocrine cells to intracellular bacteria *in vitro* using *C. trachomatis* as the infectious agent. Our findings can serve as a model of bacterial impact on EEC function but we cannot determine if our findings are *Chlamydia* specific or represent a general response to intracellular infection. Infection of mouse STC-1 enteroendocrine cells with *Salmonella typhimurium* was recently reported [44]. We successfully infected LCC18 with *Salmonella typhimurium* obtaining intracellular growth of these bacteria in EEC, but we have not analysed the effects of this infection on gene expression.

Conclusions

Based on our findings that infected EEC exhibit cell-type specific gene expression patterns related to vesicular transport, secretion and neurotransmitter regulation our study sheds some light on the potential impact of bacteria on the exocrine function of EEC. Since EEC play a pivotal role in the regulation of gut motility any impairment of enteroendocrine function could potentially contribute to motility disorders.

Methods

Cell lines

We used two human enteroendocrine cell lines: LCC-18, derived from a neuroendocrine colonic tumour (a kind gift from K. Öberg, Uppsala University Hospital, Uppsala, Sweden); and CNDT-2, derived from a small intestinal carcinoid (a kind gift from Lee M. Ellis, Dept. of Surgical Oncology, The University of Texas, Houston, TX, USA). LCC-18 cells were maintained in RPMI 1640 (Invitrogen, Life Technologies) supplemented with 5% foetal bovine serum (FBS) (Hyclone, Thermo Scientific) 0.04 mg/ml transferrin (Sigma-Aldrich), 1.09 ng/ml b-estradiol (Sigma-Aldrich), 100U/ml insulin (please add supplier), 2.6 ng/ml hydrocortisone (Sigma-Aldrich), 30nM sodium selenite (Sigma-Aldrich,) and 25 mM HEPES (Invitrogen, Life Technologies). CNDT-2 cells

were cultured in Advanced DMEM/F12 medium (Gibco, Life Technologies) supplemented with 10% FBS, 1x MEM vitamin solution (Gibco, Life Technologies), 2 mM L-glutamine (Hyclone, Thermo Scientific) and 25 mM HEPES (Invitrogen, Life Technologies) Both cell lines were grown at 37°C in a 5% CO₂ humidified environment. [7] LCC-18 are non-adherent and CNDT-2 cells grow adherent.

Chlamydial strains and infection conditions

Chlamydia trachomatis L2 strain 434 (ATCC) was propagated in HeLa cells as previously described [45]. For infection, LCC-18 and CNDT-2 cells were inoculated with *Chlamydia* at a multiplicity of infection (MOI) of 0.5-1 for 1 h at 37°C. Monolayers of infected CNDT-2 cells were washed with PBS (Phosphate buffered saline) and incubated in fresh media containing 8 µg/ml gentamycin (Invitrogen, Life Technologies) for 24 h. Infected LCC-18 cells were spun at 500 x g for 5 min to pellet the cells. The inoculum was removed and fresh media containing 8 µg/ml gentamycin (Invitrogen) to kill off extracellular bacteria was added. Infected LCC-18 cells were then incubated for 24 h. In order to induce persistent infection, LCC-18 and CNDT-2 cells were infected as described above and then incubated in medium containing 100 U/ml penicillin G (penG) (Sigma-Aldrich) for 24 h at 37°C.

Transmission electron microscopy (TEM)

Cells were grown in 6-well plates and infected with *Chlamydia trachomatis* L2 in presence or absence of penicillin G as described. At 24 h post infection the cells were harvested, fixed in 0.1 M sodium cacodylate buffer (pH 7.4) containing 2% glutaraldehyde, 0.5% paraformaldehyde, 0.1 M sucrose and 3 mM CaCl₂ and prepared for transmission electron microscopy as previously described [46] and analysed in a BioTWIN (Fei, The Netherlands). Digital images were obtained using a Veleta digital camera (Soft Imaging System, Germany).

RNA extraction and microarray expression analysis

Total RNA was isolated from 1 x 10⁶ LCC-18 and CNDT-2 cells infected with *Chlamydia trachomatis* L2 (MOI 1) in presence or absence of penicillin G for 24 h. RNA samples were prepared using the RNeasy Mini kit (Qiagen) including an on-column DNase treatment step according to the manufacturer's instructions. RNA concentrations were measured with a ND-1000 spectrophotometer (NanoDrop Technologies, USA) and RNA quality was assessed using the Agilent 2100 Bioanalyzer (Agilent Technologies Inc, USA). 250 ng of total RNA from each sample were used to generate amplified and biotinylated cDNA according to the Ambion WT Expression Kit (P/N 4425209 Rev B 05/2009) and Affymetrix GeneChip® WT Terminal Labeling and Hybridization User

Manual (P/N 702808 Rev. 1, Affymetrix Inc., USA). GeneChip® ST Arrays (GeneChip® Human Gene 1.0 ST Array) were hybridized for 16 hours in a 45°C incubator, rotated at 60 rpm. According to the GeneChip® Expression Wash, Stain and Scan Manual (PN 702731 Rev 2, Affymetrix Inc., USA) the arrays were then washed and stained using the Fluidics Station 450 and finally scanned using the GeneChip® Scanner 3000 7G.

Microarray data analysis

Analysis of the gene expression data was carried out using the freely available statistical computing software R (<http://www.r-project.org>) using packages available from the Bioconductor project (www.bioconductor.org). Raw data was normalized using the robust multi-array average (RMA) method first suggested by Li and Wong in 2001 [47,48]. In order to search for the differentially expressed genes between acute and persistent infection and the control samples (non-infected) an empirical Bayes moderated t-test [49] was applied using the 'limma' package [50]. The p-values were adjusted for multiple comparisons using the method of Benjamini and Hochberg [20]. Genes with an expression ratio >2-fold and adjusted p < 0.05 were regarded as differentially transcribed genes [21]. Gene clustering based on Gene Ontology (GO) was performed using the Database for Annotation, Visualization and Integrated Discovery (DAVID) (<http://david.abcc.ncifcrf.gov>).

The data discussed in this publication have been deposited in NCBI's Gene Expression Omnibus [51] and are accessible through GEO Series accession number GSE58151 (<http://www.ncbi.nlm.nih.gov/geo/query/acc.cgi?acc=GSE58151>).

Confirmation of microarray results by use of RT-PCR

To verify the microarray results, qPCR was carried out on 10 genes coding for different solute carrier transporters that were up- or down-regulated at 24 h after *C. trachomatis* persistent infection of CNDT-2 and LCC-18 cells compared to non-infected.

Total RNA was isolated from 1 x 10⁶ LCC-18 and CNDT-2 cells (persistently infected at 24 h after infection and non-infected cells, as prepared for the microarray experiment) by using the RNeasy Mini kit (Qiagen) according to the manufacturer's instructions. RNA concentrations were measured with a ND-1000 spectrophotometer (NanoDrop Technologies, USA), and 1,5 µg of total RNA was used for cDNA synthesis, performed with the SuperScript First-Strand Synthesis System (Invitrogen). Real-Time quantitative PCR (qPCR) was carried out using TaqMan Gene Expression Assays (Applied Biosystems) on 10 genes of interest (SLC1A4; Hs00161719_m1, SLC5A3; Hs00272857_s1, SLC7A5; Hs00185826_m1, SLC7A11; Hs00921938_m1, SLC16A6; Hs00190779_m1, SLC25A10; Hs00201730_m1, SLC25A35;

Hs01390367_m1, SLC35D2; Hs00294687_m1, SLC38A4; Hs00394339_m1, SLC41A2; Hs00259767_m1). PCRs were performed in triplicate for each gene on the same sample, and expression values normalized for the endogenous control GAPDH. Gene expression was calculated with the comparative $\Delta\Delta C_t$ method for relative quantification, and expressed as fold changes (arbitrary units) relative to an arbitrarily chosen reference sample.

Competing interests

The authors have no competing interests to disclose.

Authors' contributions

AD designed the study, analyzed the data and wrote the paper, SM conducted cell culture, infection experiment and DNA extraction and wrote a paper, KZ performed DNA extraction and wrote the paper, GA performed the RT-PCR validation, MD analyzed the data and wrote the paper, GL designed the research study and wrote the paper. All authors read and approved the final manuscript.

Acknowledgements

We thank Prof K. Öberg (Uppsala University Hospital, Uppsala, Sweden) and Prof L.M. Ellis (University of Texas, Houston, USA) for generous supply of human enteroendocrine cell lines.

We are grateful to Kjell Hultenby for excellent electron microscopy work. We thank Uppsala Array Platform, Department of Medical Science, Science for Life Laboratory, Uppsala University, Uppsala for microarray analysis. The study was supported by grants from the Ruth and Richard Julin's Foundation and Foundation Olle Engkvist Byggmästare. AD was the recipient of a Rome Foundation Fellowship in Functional GI and Motility Disorders. None of the funding sources had any involvement with the study.

Author details

¹Karolinska Institutet, Department of Medicine, Division of Gastroenterology and Hepatology, Karolinska University Hospital, Gastrocentrum Huddinge K63, Stockholm, Sweden. ²Karolinska Institutet, Department of Microbiology, Tumor and Cell Biology (MTC), Stockholm, Sweden. ³Swedish Institute for Communicable Disease Control, Stockholm, Sweden. ⁴Karolinska Institutet, Department of Biosciences and Nutrition, Stockholm, Sweden.

Received: 28 December 2013 Accepted: 12 June 2014

Published: 16 June 2014

References

1. Costedio MM, Hyman N, Mawe GM: Serotonin and its role in colonic function and in gastrointestinal disorders. *Dis Colon Rectum* 2007, **50**(3):376–388.
2. Ahonen A, Kyösola K, Penttilä O: Enterochromaffin cells in macrophages in ulcerative colitis and irritable colon. *Ann Clin Res* 1976, **8**(1):1–7.
3. Sjölund K, Alumets J, Berg NO, Håkanson R, Sundler F: Enteropathy of coeliac disease in adults: increased number of enterochromaffin cells in the duodenal mucosa. *Gut* 1982, **23**(1):42–48.
4. Coates MD, Mahoney CR, Linden DR, Sampson JE, Chen J, Blaszyk H, Crowell MD, Sharkey KA, Gershon MD, Mawe GM, Moses PL: Molecular defects in mucosal serotonin content and decreased serotonin reuptake transporter in ulcerative colitis and irritable bowel syndrome. *Gastroenterology* 2004, **126**(7):1657–1664.
5. Palazzo M, Balsari A, Rossini A, Selleri S, Calcaterra C, Gariboldi S, Zanobio L, Arnaboldi F, Shirai YF, Serrao G, Rumio C: Activation of enteroendocrine cells via TLRs induces hormone, chemokine, and defensin secretion. *J Immunol* 2007, **178**(7):4296–4303.
6. Lomax AE, Linden DR, Mawe GM, Sharkey KA: Effects of gastrointestinal inflammation on enteroendocrine cells and enteric neural reflex circuits. *Auton Neurosci* 2006, **126–127**:250–257.
7. Dlugosz A, Zakikhany K, Muschiol S, Hultenby K, Lindberg G: Infection of human enteroendocrine cells with *Chlamydia trachomatis*: a possible model for pathogenesis in irritable bowel syndrome. *Neurogastroenterol Motil* 2011, **23**(10):928–934.
8. Hogan RJ, Mathews SA, Mukhopadhyay S, Summersgill JT, Timms P: Chlamydial persistence: beyond the biphasic paradigm. *Infect Immun* 2004, **72**(4):1843–1855.
9. Bryant PA, Venter D, Robins-Browne R, Curtis N: Chips with everything: DNA microarrays in infectious diseases. *Lancet Infect Dis* 2004, **4**(2):100–111.
10. Coombes BK, Mahony JB: cDNA array analysis of altered gene expression in human endothelial cells in response to *Chlamydia pneumoniae* infection. *Infect Immun* 2001, **69**(3):1420–1427.
11. Mahony JB: *Chlamydiae* host cell interactions revealed using DNA microarrays. *Ann N Y Acad Sci* 2002, **975**:192–201.
12. Hess S, Peters J, Bartling G, Rheinheimer C, Hegde P, Magid-Slav M, Tal-Singer R, Klos A: More than just innate immunity: comparative analysis of *Chlamydia pneumoniae* and *Chlamydia trachomatis* effects on host-cell gene regulation. *Cell Microbiol* 2003, **5**(11):785–795.
13. Qin J, Li R, Raes J, Arumugam M, Burgdorf KS, Manichanh C, Nielsen T, Pons N, Levenez F, Yamada T, Mende DR, Li J, Xu J, Li S, Li D, Cao J, Wang B, Liang H, Zheng H, Xie Y, Tap J, Lepage P, Bertalan M, Batto JM, Hansen T, Le Paslier D, Linneberg A, Nielsen HB, Pelletier E, Renault P, et al: A human gut microbial gene catalogue established by metagenomic sequencing. *Nature* 2010, **464**(7285):59–65.
14. Khan WI, Ghia JE: Gut hormones: emerging role in immune activation and inflammation. *Clin Exp Immunol* 2010, **161**(1):19–27.
15. Li N, Ghia JE, Wang H, McClemens J, Cote F, Suehiro Y, Mallet J, Khan WI: Serotonin activates dendritic cell function in the context of gut inflammation. *Am J Pathol* 2011, **178**(2):662–671.
16. Gershon MD: 5-Hydroxytryptamine (serotonin) in the gastrointestinal tract. *Curr Opin Endocrinol Diabetes Obes* 2013, **20**(1):14–21.
17. van Beelen GA, Ostvik AE, Brenna O, Torp SH, Gustafsson BI, Sandvik AK: REG gene expression in inflamed and healthy colon mucosa explored by *in situ* hybridisation. *Cell Tissue Res* 2013, **352**(3):639–646.
18. Motomura Y, Ghia JE, Wang H, Akiho H, El-Sharkawy RT, Collins M, Wan Y, McLaughlin JT, Khan WI: Enterochromaffin cell and 5-hydroxytryptamine responses to the same infectious agent differ in Th1 and Th2 dominant environments. *Gut* 2008, **57**(4):475–481.
19. Kim HS, Lim JH, Park H, Lee SI: Increased immunoendocrine cells in intestinal mucosa of postinfectious irritable bowel syndrome patients 3 years after acute Shigella infection—an observation in a small case control study. *Yonsei Med J* 2010, **51**(1):45–51.
20. Benjamini Y, Hochberg Y: Controlling the false discovery rate: a practical and powerful approach to multiple testing. *J Roy Stat Soc Ser B* 1995, **57**(1):289–300.
21. Xia M, Bumgarner RE, Lampe MF, Stamm WE: *Chlamydia trachomatis* infection alters host cell transcription in diverse cellular pathways. *J Infect Dis* 2003, **187**(3):424–434.
22. Eickhoff M, Thalmann J, Hess S, Martin M, Laue T, Kruppa J, Brandes G, Klos A: Host cell responses to *Chlamydia pneumoniae* in gamma interferon-induced persistence overlap those of productive infection and are linked to genes involved in apoptosis, cell cycle, and metabolism. *Infect Immun* 2007, **75**(6):2853–2863.
23. Wang CY, Mayo MW, Korneluk RG, Goeddel DV, Baldwin AS Jr: NF-kappaB antiapoptosis: induction of TRAF1 and TRAF2 and c-IAP1 and c-IAP2 to suppress caspase-8 activation. *Science* 1998, **281**(5383):1680–1683.
24. Rothe M, Pan MG, Henzel WJ, Ayres TM, Goeddel DV: The TNFR2-TRAF signaling complex contains two novel proteins related to baculoviral inhibitor of apoptosis proteins. *Cell* 1995, **83**(7):1243–1252.
25. Park SM, Yoon JB, Lee TH: Receptor interacting protein is ubiquitinated by cellular inhibitor of apoptosis proteins (c-IAP1 and c-IAP2) *in vitro*. *FEBS Lett* 2004, **566**(1–3):151–156.
26. Paland N, Rajalingam K, Machuy N, Szczepek A, Wehr W, Rudel T: NF-kappaB and inhibitor of apoptosis proteins are required for apoptosis resistance of epithelial cells persistently infected with *Chlamydia pneumoniae*. *Cell Microbiol* 2006, **8**(10):1643–1655.
27. Ying S, Christian JG, Paschen SA, Hacker G: *Chlamydia trachomatis* can protect host cells against apoptosis in the absence of cellular inhibitor of Apoptosis Proteins and Mcl-1. *Microbes Infect* 2008, **10**(1):97–101.
28. Strelau J, Sullivan A, Bottner M, Lingor P, Falkenstein E, Suter-Crazzolara C, Galter D, Jaszai J, Kriegstein K, Unsicker K: Growth/differentiation factor-15/macrophage inhibitory cytokine-1 is a novel trophic factor for mid-brain dopaminergic neurons *in vivo*. *J Neurosci* 2000, **20**(23):8597–8603.
29. Hediger MA, Romero MF, Peng JB, Rolfs A, Takanaga H, Bruford EA: The ABCs of solute carriers: physiological, pathological and therapeutic

- implications of human membrane transport proteinsIntroduction. *Pflugers Arch* 2004, **447**(5):465–468.
30. Flach CF, Qadri F, Bhuiyan TR, Alam NH, Jennische E, Holmgren J, Lonroth I: **Differential expression of intestinal membrane transporters in cholera patients.** *FEBS Lett* 2007, **581**(17):3183–3188.
 31. Pin JP, Comps-Agrar L, Maurel D, Monnier C, Rives ML, Trinquet E, Kniazeff J, Rondard P, Prezeau L: **G-protein-coupled receptor oligomers: two or more for what? Lessons from mGlu and GABAB receptors.** *J Physiol* 2009, **587**(Pt 22):5337–5344.
 32. Kirchgessner AL: **Glutamate in the enteric nervous system.** *Curr Opin Pharmacol* 2001, **1**(6):591–596.
 33. Al-Younes HM, Gussmann J, Braun PR, Brinkmann V, Meyer TF: **Naturally occurring amino acids differentially influence the development of *Chlamydia trachomatis* and *Chlamydia (Chlamydophila) pneumoniae*.** *J Med Microbiol* 2006, **55**(Pt 7):879–886.
 34. Ojcius DM, Degani H, Mispelter J, Dautry-Varsat A: **Enhancement of ATP levels and glucose metabolism during an infection by *Chlamydia*. NMR studies of living cells.** *J Biol Chem* 1998, **273**(12):7052–7058.
 35. Delage B, Fennell DA, Nicholson L, McNeish I, Lemoine NR, Crook T, Szlosarek PW: **Arginine deprivation and argininosuccinate synthetase expression in the treatment of cancer.** *Int J Cancer* 2010, **126**(12):2762–2772.
 36. Mohrlüder J, Schwarten M, Willbold D: **Structure and potential function of gamma-aminobutyrate type A receptor-associated protein.** *FEBS J* 2009, **276**(18):4989–5005.
 37. Doepner RF, Geigerseder C, Frungieri MB, Gonzalez-Calvar SI, Calandra RS, Raemsch R, Fohr K, Kunz L, Mayerhofer A: **Insights into GABA receptor signalling in TM3 Leydig cells.** *Neuroendocrinology* 2005, **81**(6):381–390.
 38. Kidd M, Modlin IM, Eick GN, Champaneria MC: **Isolation, functional characterization, and transcriptome of *Mastomys* ileal enterochromaffin cells.** *Am J Physiol Gastrointest Liver Physiol* 2006, **291**(5):G778–G791.
 39. Kittler JT, Rostaing P, Schiavo G, Fritschy JM, Olsen R, Triller A, Moss SJ: **The subcellular distribution of GABARAP and its ability to interact with NSF suggest a role for this protein in the intracellular transport of GABA(A) receptors.** *Mol Cell Neurosci* 2001, **18**(1):13–25.
 40. Li ZS, Schmauss C, Cuenca A, Ratcliffe E, Gershon MD: **Physiological modulation of intestinal motility by enteric dopaminergic neurons and the D2 receptor: analysis of dopamine receptor expression, location, development, and function in wild-type and knock-out mice.** *J Neurosci* 2006, **26**(10):2798–2807.
 41. Gustavsson N, Han W: **Calcium-sensing beyond neurotransmitters: functions of synaptotagmins in neuroendocrine and endocrine secretion.** *Biosci Rep* 2009, **29**(4):245–259.
 42. Pang ZP, Südhof TC: **Cell biology of Ca²⁺ -triggered exocytosis.** *Curr Opin Cell Biol* 2010, **22**(4):496–505.
 43. Harrison E, Lal S, McLaughlin JT: **Enteroendocrine cells in gastrointestinal pathophysiology.** *Curr Opin Pharmacol* 2013, **13**(6):941–945.
 44. Essien BE, Grasberger H, Romain RD, Law DJ, Veniaminova NA, Saqui-Salces M, El-Zaatari M, Tessier A, Hayes MM, Yang AC, Merchant JL: **ZBP-89 regulates expression of tryptophan hydroxylase I and mucosal defense against *Salmonella typhimurium* in mice.** *Gastroenterology* 2013, **144**(7):1466–1477. doi:10.1016/j.gastro.2013.06.009
 45. Boleti H, Benmerah A, Ojcius DM, Cerf-Bensussan N, Dautry-Varsat A: ***Chlamydia* infection of epithelial cells expressing dynamin and Eps15 mutants: clathrin-independent entry into cells and dynamin-dependent productive growth.** *J Cell Sci* 1999, **112**(Pt 10):1487–1496.
 46. Muschiol S, Bailey L, Gylfe A, Sundin C, Hultenby K, Bergstrom S, Elofsson M, Wolf-Watz H, Normark S, Henriques-Normark B: **A small-molecule inhibitor of type III secretion inhibits different stages of the infectious cycle of *Chlamydia trachomatis*.** *Proc Natl Acad Sci U S A* 2006, **103**(39):14566–14571.
 47. Li C, Wong WH: **Model-based analysis of oligonucleotide arrays: expression index computation and outlier detection.** *Proc Natl Acad Sci U S A* 2001, **98**(1):31–36.
 48. Irizarry RA, Hobbs B, Collin F, Beazer-Barclay YD, Antonellis KJ, Scherf U, Speed TP: **Exploration, normalization, and summaries of high density oligonucleotide array probe level data.** *Biostatistics* 2003, **4**(2):249–264.
 49. Smyth GK: **Linear models and empirical bayes methods for assessing differential expression in microarray experiments.** *Stat Appl Genet Mol Biol* 2004, **3**:Article3.
 50. Smyth GK: **Limma: linear models for microarray data.** In *Bioinformatics and Computational Biology Solutions using R and Bioconductor*. Edited by Gentleman R, Carey VJ, Dudoit S, Irizarry RA, Huber W. New York: Springer; 2005.
 51. Edgar R, Domrachev M, Lash AE: **Gene expression omnibus: NCBI gene expression and hybridization array data repository.** *Nucleic Acids Res* 2002, **30**(1):207–210.

doi:10.1186/1757-4749-6-24

Cite this article as: Dlugosz et al.: Human enteroendocrine cell responses to infection with *Chlamydia trachomatis*: a microarray study. *Gut Pathogens* 2014 6:24.

Submit your next manuscript to BioMed Central and take full advantage of:

- Convenient online submission
- Thorough peer review
- No space constraints or color figure charges
- Immediate publication on acceptance
- Inclusion in PubMed, CAS, Scopus and Google Scholar
- Research which is freely available for redistribution

Submit your manuscript at
www.biomedcentral.com/submit

