



REVIEW

Open Access

Mycobacterium avium subsp. *paratuberculosis* as a trigger of type-1 diabetes: destination Sardinia, or beyond?

Pittu Sandhya Rani¹, Leonardo A Sechi^{*2} and Niyaz Ahmed^{*1}

Abstract

Type 1 diabetes mellitus (T1DM) is a multifactorial autoimmune disease in which the insulin producing β cell population is destroyed by the infiltrated T lymphocytes. Even though the exact cause of T1DM is yet to be ascertained, varying degree of genetic susceptibility and environmental factors have been linked to the disease progress and outcome. *Mycobacterium avium* subsp. *paratuberculosis* (MAP) is an obligate zoonotic pathogen that causes chronic infection of intestines in ruminants, the Johne's disease. MAP that can even survive pasteurization and chlorination has also been implicated to cause similar type of enteritis in humans called Crohn's disease. With the increasing recognition of the link between MAP and Crohn's disease, it has been postulated that MAP is an occult antigen which besides Crohn's could as well be thought to trigger T1DM. Epitope homologies between mycobacterial proteins (Hsp 65) and pancreatic glutamic acid decarboxylase (GAD 65) and infant nutrition studies implicate MAP as one of the triggers for T1DM. PCR and ELISA analyses in diabetic patients from Sardinia suggest that MAP acts as a possible trigger for T1DM. Systematic mechanistic insights are needed to prove this link. Unfortunately, no easy animal model(s) or *in-vitro* systems are available to decipher the complex immunological network that is triggered in MAP infection leading to T1DM.

Type 1 diabetes and MAP

Type 1 diabetes accounting for about 5-10% of all diabetics is an end stage insulinitis characterized by the presence of only 10-20% of insulin producing β -cells [1,2]. Also, T1DM is the second most common chronic disease during childhood and the most common form of diabetes affecting around 1.7 of every 1000 children [reviewed elsewhere, [3]]. Its worldwide prevalence is predicted to increase from 4.4 millions in 2000 to approximately 5.4 millions in 2010. The incidence of the disease is consistently increasing in many countries, the highest being in European countries, particularly in Finland, Sardinia and Sweden [4]. In a southern Indian urban population, the occurrence of T1DM in children less than 15 years of age was found to be 26 per 10000 [5]. Susceptibility to T1DM is inherited, but the mode of inheritance is not clearly

known [6-8]. Genetic predisposition alone cannot explain the acquisition of T1DM. Several factors such as microbes, dietary factors and environmental toxins have also been implicated in the development of the disease. The American Diabetes Association (1997) classified T1DM into two forms: (a) type 1A (auto immune diabetes) which is characterized by the presence of auto reactive antibodies in the serum of the affected individuals. These antibodies are directed against Hsp60, insulin (IAA), insulinoma-associated protein-2 (IA-2) and glutamic acid decarboxylase (GAD65), an enzyme present in pancreatic β -cells. In patients with recent onset of T1DM auto reactive T- cells have also been detected. These auto-reactive T cells have been considered to be involved in β -cell destruction. [5,9-11]. (b) The other form, diabetes type 1B (diabetes with idiopathic loss of β -cell function) [9,10] is comparatively less common, lacks the autoimmunity connection and might need insulin replacement therapy in affected patients. In summary, the development of T1DM is mechanistically very complicated and several different factors have been proposed to

* Correspondence: sechila@uniss.it
, niyazsl@uohyd.ernet.in

² Department of Biomedical Sciences, University of Sassari, Sassari, Italy

¹ Pathogen Biology Laboratory, School of Life Sciences, University of Hyderabad, Hyderabad, India

Full list of author information is available at the end of the article

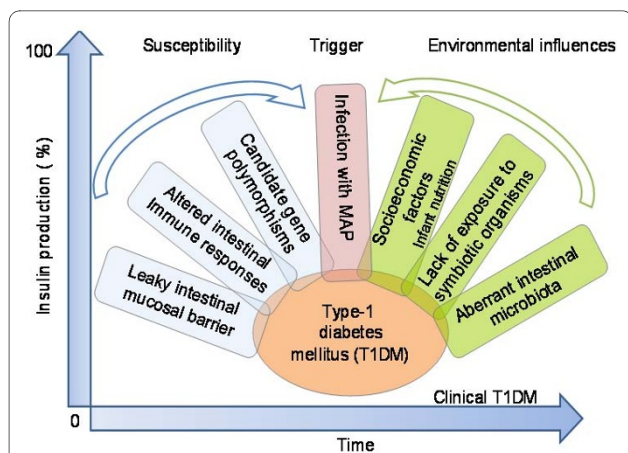


Figure 1 Putative factors facilitating development and progression of T1DM. Susceptibility factors such as altered intestinal immune responses with enhanced expression of antigen presenting HLA class II molecules and intracellular adhesion molecule (ICAM)-1 on the intestinal epithelium, leaky intestinal mucosal barrier with low levels of claudin and a background of environmental factors such as aberrant intestinal microbiota and lack of exposure to symbiotic organisms are hypothesized to be involved in the development of T-regulatory responses. And, absence of such response is implicated in the manifestation of autoimmune diseases. A complex interplay between these factors along with socio-economic factors (Sardinia) such as infant nutrition, milk infected with MAP- a putative trigger in genetically susceptible individuals, leads to the manifestation of clinical T1DM over a period of time with destruction of β cells of pancreas and decreased production of insulin. MAP has emerged central to this scenario lately due to the supporting studies from Sardinia that associates MAP with T1DM [17,28] but not with Type 2 diabetes (T2DM) [53].

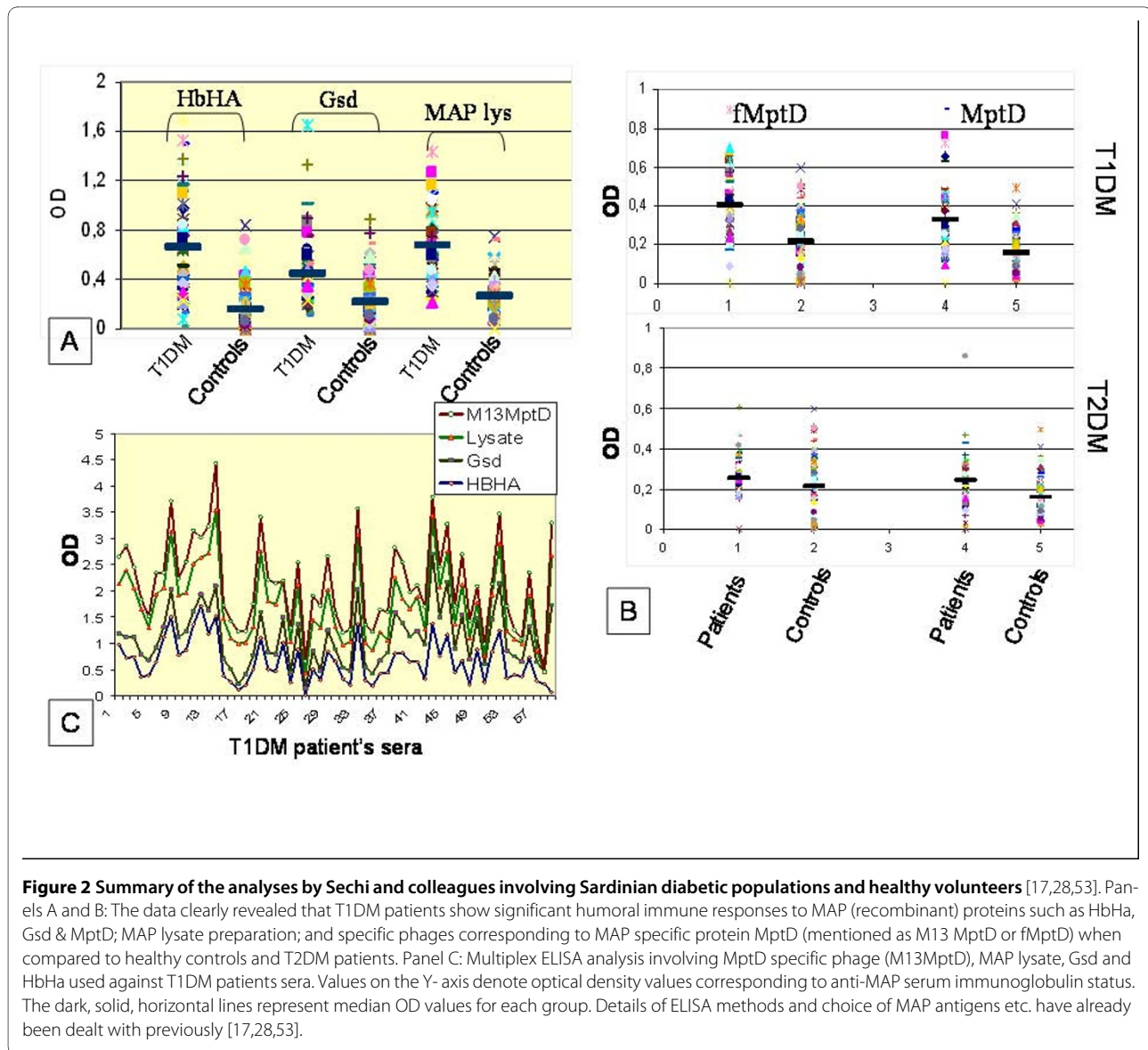
influence the clinical outcome of the disease (Fig. 1). Lately, however, the role of microorganisms and pathogens is becoming evident in T1DM, although, without much (proof of principle) evidence; nevertheless, clinical level, supportive association studies based on diagnostics that specifically target MAP DNA and serum antibodies in the T1DM patients have been highly suggestive of a pathogen trigger (Fig. 2).

Is MAP the trigger? - the Sardinian model

MAP, an obligate zoonotic pathogen is the causative agent of a chronic, inflammatory bowel disease referred to as Johne's disease of ruminants. The ability of MAP to exist in spheroplast form in addition to the bacillary forms adds to its survival potential [12]. The primary route of MAP infection is fecal-oral and once ingested, the bacterium lodges in to the mucosa associated lymphoid tissue (MALT) of the small intestine. It is then endocytosed by the M cells of Peyer's patches, which are further phagocytosed by intra epithelial macrophages. Activation of the macrophages causes an inflammatory immune response leading to clinical signs of Johne's disease. In spite of its broad pathogenicity, MAP can live in

animals for years without causing any clinical disease [13,14]. Wildlife reservoirs contribute to the cycle of re-infection [15]. Infected animals shed MAP bacilli in their milk and feces. MAP is found to be present in untreated water such as well water and in water bodies contaminated by agricultural runoff. The treatment of water to make it potable by the processes of sedimentation, filtration and chlorination has little or no effect on MAP [16]. Our group has shown in the past that MAP significantly associates with T1DM in Sardinian patients [17]. In the back-drop of sheep husbandry and high incidence of autoimmune diseases in Sardinia, it makes a lot of sense to brand MAP as a putative environmental trigger. It is however, not clear whether MAP also associates with T1DM (or other autoimmune diseases that occur) in other geographical regions. Nevertheless, the Sardinian model greatly helps us understand the inner side of socio-economic and lifestyle factors in shaping a vulnerable, susceptible population despite the fact that sheep husbandry brought prosperity in terms of livelihood in this Mediterranean island. Modern animal breeding and expansion of dairy industries in the developed countries have led to increased exposure of the individuals to some of the animal pathogens. This is more prominently observed in Sardinia where sheep farming is intensively practiced and the sheep measure about 4-fold of the human population [17]. Further, studies have shown that Sardinia is highly endemic for the presence of MAP infection in sheep. MAP shedded in the milk of infected cows/sheep has been found to survive pasteurization [18]. There are several evidences indicating an association between early exposure to cow's milk and increased risk of T1DM [2,19,20]. Interestingly, it has also been observed that children at risk for T1DM who were breast fed exclusively for more than six months were less likely to have T1DM later in life than children at similar risk who were weaned on to cow's milk [21]. Such observations led to the foundation of the TRIGR study: Trial to Reduce Insulin Dependent Diabetes Mellitus in the Genetically at Risk. It is an ongoing study in 17 countries encompassing 6,200 infants who are genetically at risk to develop T1DM [22,23].

MAP, which causes Johne's disease in ruminants, is also implicated to cause a similar type of enteritis in humans called Crohn's disease [24,25]. Association of MAP with Crohn's disease indicates that there may be a putative link between MAP and T1DM [26]. As this hypothesis is getting ground, rapid and sensitive detection of active MAP infection in T1DM patients has become a challenge. Sardinia, a genetic isolate with alleles and haplotypes that are rare or absent elsewhere poses as a high endemic zone of autoimmune disorders such as T1DM, lupus erythematosus and multiple sclerosis. An interplay of genetic and environmental factors in Sardinia possibly could make it



a hotspot to study autoimmune disorders. Sechi *et al.*, (2008) have successfully demonstrated PCR based detection of IS 900, a specific signature locus of MAP in T1DM cases in Sardinia [27]. After identification of MAP in the blood of T1DM it was quite necessary to understand the host immune responses to MAP. This led them further to design immunoassays for the detection of anti-MAP antibodies in diabetic patients by ELISA, employing sensitive antigenic targets such as HbHa (heparin binding hemagglutinin) and Gsd (glycosyl transferase) proteins [17]. However, anti-MAP humoral responses corresponding to HbHa and Gsd could not be indicative of an active infection and also since these proteins are encoded by wider range of mycobacteria, this raised an issue of cross-reactivity with tubercle bacilli which could be an issue to deal with the BCG vaccinated individuals. This group later

improved the immunoassays by including a MAP specific protein, MptD into their battery of antigens. Apart from purified antigens, specific phages corresponding to MptD (fMptD) were also used in a sandwich ELISA scheme [28]. The improvised ELISA assays that use multiple target proteins and phages for the detection of anti-MAP antibodies revealed extremely significant humoral immune responses in T1DM patients when compared to T2DM and healthy controls [28] (Fig. 2). A final evidence was presented in terms of culture of MAP bacilli from the blood of two of the T1DM patients from Sardinia [28].

Genetic susceptibility and microbial mechanisms of T1DM

The recent development of high throughput genotyping technologies and the availability of large sample sizes

have become a favorable tool for association studies of human genes controlling complex traits [29]. Susceptibility genes for insulin dependent diabetes have been mapped to the chromosomal regions: HLA DRQ, INS VNTR and CTLA-4 (cytotoxic lymphocyte antigen-4) [30,31]. Additionally, SLC11A1 (NRAMP) and VDR (vitamin D receptor) genes have also been implicated to be involved in T1DM [32,33]. In humans, SLC11A1 - solute carrier 11A1 gene (previously known as NRAMP1) is mapped on 2q35, is composed of 15 exons and it spans at least 16 kb of the DNA. It encodes an integral membrane protein of 550 amino acids that is expressed exclusively in the lysosomal compartment of monocytes and macrophages. This membrane protein functions as a cation transporter that regulates iron homeostasis [34,35]. In response to intracellular pathogens, SLC11A1 exhibits multiple pleiotropic effects such as gamma interferon induced class II expression and acidification of phagosomes [35,36]. Mutations of SLC11A1 impair phagosome acidification, creating thereby a suitable environment for the persistence of intracellular bacteria [37]. Sechi and colleagues have also proposed that SLC11A1 gene polymorphism is associated with MAP DNA presence and T1DM in Sardinia [38].

Infectious agents such as MAP by virtue of their antigens have been implicated to play an important role in the development of autoimmune diseases such as Crohn's disease and T1DM. Sequence similarity among the infectious agents and self proteins (molecular mimicry) has been proposed to be one of the central mechanisms underlying development of autoimmunity [39]. T1DM is characterized by elevated levels of immune responses targeted against several auto antigens including Hsp 60, insulin, insulinoma - associated protein-2 (IA-2) and glutamic acid decarboxylase (GAD) [5,17,40]. GAD exists in two forms, GAD65 (65 KDa; 585 amino acids) and GAD67 (67 KDa; 593 amino acids). Only GAD 65 is expressed in the β -cells of human islets. GAD is a rate-limiting enzyme that catalyzes the conversion of glutamic acid to γ -amino butyric acid (GABA) [41]. Hsp 65 is a heat shock protein that is unique to mycobacteria [42]. It has been found that GAD65 and Hsp 65 have similar amino acid sequences [43]. In a study, it was found that up to 70 percent of T1DM patients have antibodies to GAD 65, compared to 4 percent of healthy individuals, thereby suggesting a cross reactive immune response targeted against GAD 65 [5]. This cross reactivity might pave the way for the destruction of the islet cells in genetically susceptible individuals [17]. More recent studies also support this hypothesis by proving that DNA vaccines involving mycobacterial HSP 65 protected NOD mice against diabetes [44]. Apart from this, a cause and effect experiment to serve as 'proof of principle' has never been reported to unequivocally support or rule out

molecular mimicry as a cardinal process behind T1DM. The main reason for this could be non-availability of any practical and convenient model for *in vitro* or *in vivo* studies involving molecular mimicry.

It is not clear if molecular mimicry occurs also in cases of other chronic infections; individuals with T1DM are often susceptible to infection with chronic pathogens [45]. It has been shown that *Helicobacter pylori* (*H. pylori*), which causes gastritis, peptic ulcer and gastric cancer, is common in T1DM [46]. Certain studies found a higher prevalence of *H. pylori* infection in diabetic patients with a reduced glycemic control, while others did not support any correlation between metabolic control and *H. pylori* infection [47]. Interestingly it has been observed that the possibility of induction of Crohn's disease has also been reported after eradication of *H. pylori* [48,49].

Prospective

Though MAP is identified as a trigger for T1DM, the underlying mechanism of MAP induced β -cell destruction is still an unsolved puzzle. As no easy animal model is available, development of an *in vitro* or an *in vivo* system will be of importance for deciphering the immunological network that is triggered in MAP pathogenesis, and that can be exploited for developing the functional evidence to link MAP to T1DM. It is also essential to understand the mechanisms by which mycobacteria such as MAP are acting as triggers in different autoimmune diseases and T1DM in particular. There is an urgent need to test a large number of geographically distinct patient populations with clinical T1DM in the same way as Sardinian patients have been tested for MAP. Also, it will be essential to develop high throughput genetic screens to identify single nucleotide polymorphisms that are associated with autoimmune diseases and those related to persistence of intracellular pathogens and a compensatory upregulation of proinflammatory cytokines. While it is important to identify other mycobacterial antigens that trigger host cell signaling cascades, it is certainly possible to scale up diagnostic screening tests based on existing antigens so that population level testing becomes practicable.

For decades, the population of Sardinia has been the subject of several human genetic analysis experiments. Population geneticists have revealed highly complex genetic relationships among Sardinians and other European populations. Peculiar gene pool characteristics of the Sardinians might have evolved over time as a function of strict isolation and consequent endogamy, consanguinity and the burden of historical scourges such as Malaria. High resolution, population based analyses are required to ascertain or negate any role of the unique Sardinian

haplotypes and the high incidence of the autoimmune diseases.

Non-specific immune regulators such as *Mycobacterium indicus pranii* (MIP) [50] have been shown to play significant roles as immuno-therapeutic/prophylactic for leprosy, tuberculosis, leishmaniasis, psoriasis, bladder cancer and ano-genital warts [reviewed elsewhere - [51,52]]. It appears that non-specific immune stimulation could be the basic mechanism underlying the clearance of the lesions in all the above diseases when MIP was used. By analogy, MIP could also be used as a potential therapeutic/prophylactic agent for the autoimmune diseases rampant in Sardinia and beyond. It is essential therefore to test this organism in a setting such as Sardinia [53] as it has already worked wonderfully in a high burden country such as India which is crippled with tuberculosis, HIV, and diabetes. Given this, it will be tempting to propose experimental administration of MIP to susceptible populations and evaluate if it retards early onset of T1DM. Finally, the roles of intestinal microbiota and probiotic organisms should be explored at the interface of gut permeability and mucosal immunity [54] and the regulations thereof. Advancements in metagenomics of the gut microbiota and the consequent metabolomics and systems biology projects would be able to unravel the complex interactions underlying the alternative microbial mechanisms of T1DM apart from chronic MAP infection.

Conflict of interests

The authors declare that they have no competing interests.

Authors' contributions

PSR surveyed literature and developed text draft of the review. NA refined the write up, sketched figure-1 and wrote the prospective. LAS and NA supervised the Sardinian diabetes/MAP association studies that form the core concept of this article.

All authors have read and approved the final manuscript.

Acknowledgements

Related research in Ahmed lab was funded through a grant from the Department of Biotechnology (DBT) of the Indian Government (No. BT/PR8040/Med/14/1224/2006) and startup grants (OBC/XI plan) from the University of Hyderabad. Research in Sechi lab was supported by grants under the FP6 European project no. 036812 - acronym: Nanomyc, and the Italian PRIN 2007W52X9M_005. Pittu Sandhya Rani was supported by a Junior Research Fellowship from the DBT, India. The funders had no role in study design, data collection and analysis, decision to publish, or preparation of the manuscript.

Author Details

¹Pathogen Biology Laboratory, School of Life Sciences, University of Hyderabad, Hyderabad, India and ²Department of Biomedical Sciences, University of Sassari, Sassari, Italy

Received: 10 March 2010 Accepted: 29 March 2010

Published: 29 March 2010

References

1. Dahlquist G: Environmental risk factors in human type1 diabetes: an epidemiological perspective. *Diabetes Metab Rev* 1995, **11**:37-46.

2. Akerblom HK, Vaarala O, Hyoty H, Ilonen J, Knip M: Environmental factors in the etiology of type1 diabetes. *Am J Med Genet* 2002, **115**:18-29.
3. Zimmet P, Alberti KG, Shaw J: Global and societal implication of the diabetes epidemic. *Nature* 2001, **414**:782-787.
4. Onkamo P, Vaananen S, Karvonen M, Tuomilehto J: Worldwide increase in incidence of type 1 diabetes- the analysis of the data on published incidence trends. *Diabetologia* 1999, **42**:1395-1403.
5. Mehra NK, Kumar N, Kaur G, Kanga U, Tandon N: Biomarkers of susceptibility to type-1 diabetes with special reference to the Indian population. *Indian J Med Res* 2007:321-344.
6. McCarthy MI: Susceptibility gene discovery for common metabolic and endocrine traits. *J Mol Endocrinol* 2002, **28**:1-17.
7. Redondo MJ, Yu L, Hawa M, Mackenzie T, Pyke DA, Eisenbarth GS, Leslie RDG: Heterogeneity of type 1 diabetes: analysis of monozygotic twins in Great Britain and the United States. *Diabetologia* 2001, **44**:354-362.
8. Hyttinen V, Kaprio J, Kinnunen L, Koskenvuo M, Tuomilehto J: Genetic liability of type1 diabetes and the onset age among 22,650 young Finnish twin pairs: a nationwide follow-up study. *Diabetes* 2003, **52**:1052-1055.
9. Lammi N, Karvonen M, Tuomilehto J: Do microbes have a causal role in type1 diabetes? *Med Sci Monit* 2005, **11**:63-69.
10. Petersen LD, Duinkerken G, Bruining GJ, van Lier RA, deVries RR, Roep BO: Increased numbers of in vivo activated T-cells in patients with recent onset insulin-dependent diabetes mellitus. *Journal of Autoimmunity* 1996, **9**:731-737.
11. Buschard K, Damsbo P, Ropke C: Activated CD4+ and CD8+ T-lymphocytes in newly diagnosed type 1 diabetes: a prospective study. *Diabetic Medicine* 1990, **7**:132-136.
12. Rowe MT, Grant IR: *Mycobacterium avium* subsp. paratuberculosis and its potential survival tactics. *Lett Appl Microbiol* 2006, **42**:305-311.
13. Harris NB, Barletta RG: *Mycobacterium avium* subsp. Paratuberculosis in veterinary medicine. *Clin Microbiol* 2001, **14**:489-512.
14. O'Shea B, Khare S, Bliss K, Klein P, Ficht TA, Adams LC, Rice-Ficht AC: Amplified fragment length polymorphism reveals genomic variability among *Mycobacterium avium* subsp. paratuberculosis isolates. *Journal of clinical microbiology* 2004, **42**:3600-3606.
15. Daniels MJ, Henderson D, Greig A, Stevenson K, Sharp JM, Hutchings MR: The potential role of wild rabbits *Oryctolagus cuniculus* in the epidemiology of paratuberculosis in domestic ruminants. *Epidemiol Infect* 2003, **130**:553-559.
16. Pierce E: Possible transmission of *Mycobacterium avium* subspecies paratuberculosis through potable water: lesson from an urban cluster of Crohn's disease. *Gut Pathog* 2009, **1**:17.
17. Sechi LA, Rosu V, Pacifico A, Fadda G, Ahmed N, Zanetti S: Humoral immune responses of Type-1 Diabetes patients to *Mycobacterium avium* subspecies paratuberculosis lend support to the infectious trigger hypothesis. *Clin Vaccine Immunol* 2008, **15**:320-326.
18. Ellingson JLE, Anderson JL, Koziczkowski JJ, Radcliff RP, Sloan SJ, Allen SE, Sullivan NM: Detection of viable *Mycobacterium avium* subsp. paratuberculosis in retail pasteurized whole milk by two culture methods and PCR. *J Food Prot* 2005, **68**:966-972.
19. Gerstein HC: Cow's milk exposure and type I diabetes mellitus. A critical overview of the clinical literature. *Diabetes Care* 1994, **17**:13-19.
20. Gimeno SG, de Souza JM: IDDM and milk consumption. A case-control study in Sao Paulo, Brazil. *Diabetes Care* 1997, **20**:1256-1260.
21. Dow CT: Paratuberculosis and Type I diabetes is this the trigger? *Medical Hypotheses* 2006, **67**:782-785.
22. The TRIGR study [<http://www.trigr.org>]
23. Pavlik I: *Mycobacterium avium* subsp. Paratuberculosis in powdered infant milk. *Proceedings of the 8th international colloquium on paratuberculosis. Copenhagen, Denmark 2005* [<http://proc8.paratuberculosis.org/index.html>].
24. Naser SA, Ghobrial G, Romero C, Valentine JF: Culture of *Mycobacterium avium* subspecies paratuberculosis from the blood of patients with Crohn's disease. *Lancet* 2004, **364**:1039-1044.
25. Sechi LA, Scanu AM, Mollicotti P, Cannas S, Mura M, Dettori G, Fadda G, Zanetti S: Detection and Isolation of *Mycobacterium avium* subspecies paratuberculosis from intestinal mucosal biopsies of patients with and without Crohn's disease in Sardinia. *Am J Gastroenterol* 2005, **100**:1529-1536.
26. Sechi LA, Paccagnini D, Salza S, Pacifico A, Ahmed N, Zanetti S: *Mycobacterium avium* subspecies paratuberculosis bacteremia in

- type-1 diabetes mellitus: an infectious trigger?** *Clin Infect Dis* 2008, **46**:148-149.
27. Granieri E, Casetta I, Govani V, Tolam MR, Marchi D, Murgia SB, Ticca A, Pugliatti M, Murgia B, Rosati G: **The increasing incidence and prevalence of MS in a Sardinian province.** *Neurology* 2000, **55**:842-848.
28. Rosu V, Ahmed N, Paccagnini D, Gerlach G, Fadda G, Hasnain SE, Zanetti S, Sechi LA: **Specific Immunoassays Confirm Association of *Mycobacterium avium* Subsp. *paratuberculosis* with Type-1 but Not Type-2 Diabetes Mellitus.** *PLoS ONE* 2009, **4**:e4386.
29. Maier LM, Wicker LS: **Genetic susceptibility to type 1 diabetes.** *Current opinion in immunology* 2005, **17**:601-608.
30. Eerligh P, Koeleman BP, Dudbridge F, Jan Bruining G, Roep BO, Giphart MJ: **Functional genetic polymorphisms in cytokines and metabolic genes as additional genetic markers for susceptibility to develop type 1 diabetes.** *Genes Immun* 2004, **5**:36-40.
31. Hornum L, Markholst H: **New autoimmune genes and the pathogenesis of type 1 diabetes.** *Curr Diab Rep* 2004, **4**:135-142.
32. Bassuny WM, Ihara K, Matsuura N, Ahmed S, Kohno H, Kuromaru R, Miyako K, Hara T: **Association study of the NRAMP1 gene promote polymorphism and early-onset type 1 diabetes.** *Immunogenetics* 2002, **54**:282-285.
33. Motohashi Y, Yamada S, Yanagawa T, Maruyama T, Suzuki R, Niino M, Fukazawa T, Kasuga A, Hirose H, Matsubara K, Shimada A, Saruta T: **Vitamin D receptor gene polymorphism affects onset pattern of type 1 diabetes.** *J Clin Endocrinol Metab* 2003, **88**:3137-3140.
34. Blackwell JM, Searle S, Goswami T, Miller EN: **Understanding the multiple functions of Nramp1.** *Microbes Infect* 2000, **2**:317-321.
35. Stober CB, Brode S, White JK, Jean-Francois P, Blackwell JM: **SLC11a1, formerly Nramp1, is expressed in dendritic cells and influences Major Histocompatibility complex class II expression and antigen presenting cell function.** *Infection and Immunity* 2007, **75**:5059-5067.
36. Lapham AS, Phillips ES, Barton CH: **Transcriptional control of Nramp1: a paradigm for the repressive action of c-Myc.** *Biochem Soc Trans* 2004, **32**:1084-1086.
37. Hackam DJ, Rotstein OD, Zhang W, Gruenheid S, Gros P, Grinstein S: **Host resistance to intracellular infection: mutation of natural resistance-associated macrophage protein 1 (Nramp1) impairs phagosomal acidification.** *J Exp Med* 1998, **188**:351-364.
38. Paccagnini D, Sieswerda L, Rosu V, Masala S, Pacifico A, Gazouli M, Ikononopoulos J, Ahmed N, Zanetti S, Sechi LA: **Linking chronic infection and autoimmune diseases: Infection with *Mycobacterium avium* subspecies *paratuberculosis*, SLC11A1 polymorphism and Type-1 diabetes mellitus.** *PLoS ONE* 2009, **4**:e7109.
39. Wucherpfennig KW: **Structural basis of molecular mimicry.** *J Auto immune* 2001, **16**:293-302.
40. Davies JM: **Molecular mimicry: can epitope mimicry induce autoimmune disease?** *Immunol Cell Biol* 1997, **75**:113-126.
41. Zugel U, Kaufmann SH: **Role of heat shock proteins in protection from and pathogenesis of infectious diseases.** *Clin Microbiol Rev* 1999, **12**:19-39.
42. Hagopian WA, Michelson B, Karlsen AE, Larsen F, Moody A, Grubin CE, Rowe R, Petersen J, McEvoy R, Lernmark A: **Autoantibodies in IDDM primarily recognize the 65,000-M (r) isoform of glutamic acid then the 67,000 (r) isoform of glutamic acid decarboxylase.** *Diabetes* 1993, **42**:631-636.
43. Child DF, Williams CP, Jones RP, Hudson PR, Jones M, Smith CJ: **Heat shock protein studies in type 1 and type 2 diabetes and human islet cell culture.** *Diabetic Med* 1995, **12**:595-599.
44. Santos R, Sartori A, Bonato VLD, Coelho-Castelo AA, Vilella CA, Zollner RL, Silva CL: **Immune modulation induced by tuberculosis DNA vaccine protects non-obese diabetic mice from diabetes progression.** *Clin Exp Immunol* 2007, **148**:570-578.
45. Larkin JG, Frier BM, Ireland JT: **Diabetes mellitus and infection.** *Postgrad Med J* 1985, **61**:233-237.
46. Oldenburg B, Diepersloot RJA, Hoekstra JBL: **High seroprevalence of *Helicobacter pylori* in diabetes mellitus patients.** *Digest Dis Sci* 1996, **41**:446-458.
47. Ojetti V, Migneco A, Silveri NG, Ghirlanda G, Gasbarrini G, Gasbarrini A: **The Role of *H. pylori* Infection in Diabetes.** *Curr Diabetes Rev* 2005, **1**:343-347.
48. Tursi A: **Onset of Crohn's disease after *Helicobacter pylori* eradication.** *Inflamm Bowel Dis* 2006, **12**:1008-1009.
49. Jovanovic IR, Milosavjevic TN, Jankovic GP, Micev MM, Dugalic PD, Saranovic D, Ugljesic MM, Popovic DV, Bulajic MM: **Clinical onset of the Crohn's disease after eradication therapy of *Helicobacter pylori* infection: does *Helicobacter pylori* infection interact with natural history of inflammatory bowel diseases?** *Med Sci Monit* 2001, **7**:137-141.
50. Ahmed N, Saini V, Raghuvanshi S, Khurana JP, Tyagi AK, Tyagi A, Hasnain SE: **Molecular analysis of a leprosy immunotherapeutic bacillus provides insights into *Mycobacterium* evolution.** *PLoS ONE* 2007, **2**:e968.
51. Saini V, Raghuvanshi S, Talwar GP, Ahmed N, Khurana JP, Hasnain SE, Tyagi AK, Tyagi AK: **Polyphasic taxonomic analysis establishes *Mycobacterium indicus pranii* as a distinct species.** *PLoS One* 2009, **4**:e6263.
52. Talwar GP, Ahmed N, Saini V: **The use of the name *Mycobacterium w* for the leprosy immunotherapeutic bacillus creates confusion with *M. tuberculosis-W* (Beijing strain): A suggestion.** *Infect Genet Evol* 2008, **8**:100-101.
53. Rosu V, Ahmed N, Paccagnini D, Pacifico A, Zanetti S, Sechi LA: ***Mycobacterium avium* subspecies *paratuberculosis* is not associated with type-2 diabetes mellitus.** *Ann Clin Microbiol Antimicrobials* 2008, **7**:9.
54. Vaarala O, Atkinson MA, Neu J: **The "Perfect Storm" for Type 1 Diabetes. The complex interplay between intestinal microbiota, gut permeability and mucosal immunity.** *Diabetes* 2008, **57**:2555-2562.

doi: 10.1186/1757-4749-2-1

Cite this article as: Rani et al., *Mycobacterium avium* subsp. *paratuberculosis* as a trigger of type-1 diabetes: destination Sardinia, or beyond? *Gut Pathogens* 2010, **2**:1

Submit your next manuscript to BioMed Central and take full advantage of:

- Convenient online submission
- Thorough peer review
- No space constraints or color figure charges
- Immediate publication on acceptance
- Inclusion in PubMed, CAS, Scopus and Google Scholar
- Research which is freely available for redistribution

Submit your manuscript at
www.biomedcentral.com/submit

