



GENOME ANNOUNCEMENT

Open Access

# Genome sequencing, annotation and analysis of *Salmonella enterica* sub species *salamae* strain DMA-1

Sathyaseelan Sathyabama<sup>2†</sup>, Gurwinder Kaur<sup>1†</sup>, Amit Arora<sup>1</sup>, Sheenam Verma<sup>2</sup>, Nida Mubin<sup>2</sup>, Shanmugam Mayilraj<sup>1\*</sup> and Javed N Agrewala<sup>2\*</sup>

## Abstract

**Background:** The genus *Salmonella* is Gram-negative which belongs to the family *Enterobacteriaceae*. In this study, we have sequenced the whole genome of the strain DMA-1, which was isolated from mouse stool sample and identified as *Salmonella enterica* subspecies *salamae*.

**Results:** The strain DMA-1 was closely related at the 16S rRNA gene sequence level with the members of the genus *Salmonella*: *Salmonella enterica* subspecies *salamae* DSM 9220<sup>T</sup> (100%), followed by *Salmonella enterica* subspecies *diarizonae* (99.1%), *Salmonella enterica* subspecies *enterica* (99.0%) and *Salmonella enterica* subspecies *indica* (98.5%). We obtained the draft genome of *S. enterica* subspecies *salamae* strain DMA-1 with a size of 4,826,209 bp and mean G+C content of 52.0 mol%.

**Conclusions:** We for the first time, sequenced the entire genome of the strain DMA-1 which was isolated from the mouse stool sample and identified it as *Salmonella enterica*, sub species *salamae*. Further, we subjected the whole genome sequencing data for annotation that revealed several genes responsible for the pathogenesis, virulence, defense, metabolism and other genomic features.

**Keywords:** *Salmonella enterica* subspecies *salamae*, RAST, EzTaxon

## Background

During a study on identifying bacterial diversity of mouse stool samples, strain DMA-1 was isolated on tryptone soya agar (TSA, HiMedia, Mumbai, India). The strain DMA-1 was subjected to polyphasic taxonomic studies to identify the exact taxonomic status. The polyphasic taxonomical studies involved phenotypic, biochemical characterization and 16S rRNA gene sequencing that identified it as *Salmonella enterica* subspecies *salamae*. The genus *Salmonella* was first proposed in 1952 by Kauffmann and Edwards [1]. Later on, it was emended in 1987 by Le Minor and Popoff [2]. The members of the genus *Salmonella* are Gram-negative, rod shaped, facultative anaerobes capable of aerobic respiration producing

ATP and fermentation in the absence of oxygen. At present, the genus *Salmonella* consists of three species and six sub species. The *Salmonella enterica* subspecies include: *S. enterica* subspecies *enterica* (subspecies I), *S. enterica* subspecies *salamae* (subspecies II), *S. enterica* subspecies *arizonae* (subspecies IIIa), *S. enterica* subspecies *diarizonae* (subspecies IIIb), *S. enterica* subspecies *houtenae* (subspecies IV) and *S. enterica* subspecies *indica* (subspecies V). *S. enterica* includes the majority of *Salmonella* strains isolated from humans and warm blooded animals. But *Salmonella bongori* is typically obtained from cold blooded animals [3]. Most of the rodents present in laboratories are susceptible to *Salmonella* infections. Rodent feces cause infections via fecal-oral transmission, when a susceptible rodent ingests the bacteria present in their feed or contaminated drinking water. Immunocompromised caretakers of these rodents may get serious illness, which in some cases develop into life threatening diseases. Therefore in laboratories incoming rodents are

\* Correspondence: mayil@imtech.res.in; javed@imtech.res.in

†Equal contributors

<sup>1</sup>Microbial Type Culture Collection and Gene bank (MTCC), CSIR-Institute of Microbial Technology, Sector 39-A, Chandigarh, India

<sup>2</sup>Immunology Laboratory, CSIR-Institute of Microbial Technology, Sector 39-A, Chandigarh, India

quarantined and health monitoring for any rodent colony involves routine intestinal culture [4]. Infection caused by *Salmonella enterica* species is a major public health issue inflicting mortality globally. Contagious diseases caused by *S. enterica* depend mainly on their secreted proteins and adhesion from fimbrial and non-fimbrial sources, which produce biofilm and build contact with the host cell [5]. *S. enterica* also contains type I fimbriae, representative of other enteric bacteria, which help in attaching themselves to epithelial cells [6]. They are shorter in size than flagella but have a peritrichous distribution. Fimbriae are made up of major and minor protein subunits that make a cylinder around a hollow core [7]. Not all strains of *S. enterica* express fimbriae, but the fimbriae strains are more virulent [8].

*Salmonella* species could be differentiated on the basis of three antigens present on the cell: H antigen which is a flagellar antigen occurring only in one phase (1 or 2) and can interchange itself [9,10]; O antigen is a somatic antigen present on the outer membrane. The specificity of the O antigen is obtained by the character of the repeating units present on the outer O-polysaccharide chain [9]. The Vi antigen, virulence antigen which is a capsular polysaccharide that overlays the O antigen, but it is not possessed by all serovars. The capsule present in the *Salmonella* sp. is not essential for infection, yet it increases the infectivity by making it less visible to the body's immune system [11].

*S. enterica* is also able to extract iron from host proteins by siderophores, which are formed by the cell when iron concentration is low, siderophores also contribute to virulence [12]. It also shows a mixed-acid heterofermentation of glucose to produce ATP. This process also produces CO<sub>2</sub> and H<sub>2</sub> with a variety of acid final products, for example formate, acetate, lactate, and succinate [13]. *S. enterica* can nourish on maltose and maltodextrins with the help of type I ATP-binding cassette transporter. This system is present on a maltose regulon. In a maltose regulon the maltose enter into the cell by crossing the outer membrane through a homotrimeric maltoporin, after that it binds to a protein having pore-forming subunits that result in the translocation of an ATP-binding subunit across the inner-membrane where it is used by the cell [14]. *S. enterica* causes infectious diseases by entering the host cells that are present around the intestine, and attaching themselves to the cells of intestine, thereby causing ruffling response in the host cell membrane [5]. Ruffling is linked to a triggering response that results in macropinocytosis. The vesicles of macropinocytosis are large, and provide an efficient route for non-selective endocytosis of macromolecules [15]. The entry of the bacterial cells also harms the microvilli which are present on the cell surface, which causes disturbance in the white blood cells as they start to flood the mucosa thereby altering the homeostasis between absorption and secretion of the body [16].

*S. enterica* has a number of virulence factors like enterotoxin, endotoxin, and cytotoxin which are responsible for

virulence. Enterotoxin causes diarrhea and vomiting in which the cells discharge huge amounts of fluid into the lumen. Endotoxin consists of toxic lipopolysaccharide which causes fever by inspiring host cells to discharge endogenous pyrogens. The cytotoxin interferes with protein synthesis in the host cell and leads to an efflux of calcium ions [15]. In some cases the infectious cells are transferred to the liver or spleen, where they multiply and return either to the host's intestinal tract or get defecated [9].

Food contamination often occurs from infested feces that are present in polluted water, soil or other contaminated environments. *S. enterica* is responsible for causing many abdominal complications like gastroenteric disorders which involve stomach pain, cramps etc. When there is an imbalance between absorption and secretion, first signs include abdominal cramps, diarrhea, fever and nausea. Mostly the infection caused by food contamination cures within one week's time, but more serious cases generally need fluoroquinolone or cephalosporin's that eliminate *S. enterica* by interfering with their cell wall synthesis [17].

Presently only two species of the genus *Salmonella* have been sequenced for their whole genome: *Salmonella bongori* (two isolates), *Salmonella enterica*, forty three isolates including two isolates of *Salmonella enterica* subsp *salamae*, isolated from different sources, *Salmonella enterica* subspecies *salamae* serovar 58:1, z13, z38:z6 strain 00-0163 [18] and *Salmonella enterica* subspecies *salamae* strain 3588/07 [Young et al. unpublished]. It is for the first time whole genome of strain DMA-1, isolated from mouse stool sample was sequenced by us. The whole genome sequencing was done in order to produce accurate reference genome which aids in identification and comparative genomic study. Moreover it also helps to analyze genes involved in virulence, disease and multidrug resistance.

## Methods

### Isolation, identification, DNA extraction, genome sequencing, assembly and annotation

*Salmonella enterica* subspecies *salamae* strain DMA-1 was isolated from mouse stool samples on 9<sup>th</sup> October, 2012, and grown in tryptone soya agar (TSA, HiMedia, Mumbai, India). Genomic DNA extraction, amplification, 16S rRNA gene sequencing, phylogenetic analysis and G+C content were performed as described previously [19,20]. The genome of strain *Salmonella enterica*, subspecies *salamae* strain DMA-1 was sequenced at c-CAMP, Next Generation Genomic Facility, Bengaluru, India (<http://www.ccamp.res.in>), using a standard run of Illumina HiSeq 1000 sequencing technology. CLC Bio Workbench v6.0.2 (CLC Bio, Aarhus, Denmark) was employed for preprocessing of the data to remove the redundant and irrelevant information. A high quality 24,334,734 vector filtered reads at approximately 497.37

times coverage were used for final assembly (at word size of 45 and bubble size of 98). This draft genome comprising 4,826,209 bp was annotated with the help of RAST (Rapid Annotation using Subsystem Technology) system [21] server and RNAmmer 1.2 [22] server.

## Results and discussions

### Quality assurance: Identification

Based on 16S rRNA gene sequence and phylogenetic analysis, strain DMA-1 was identified as *Salmonella enterica* subspecies *salamae*. Further polyphasic taxonomical data confirmed that the strain DMA-1 belongs to *Salmonella enterica* subspecies *salamae*. After two days of incubation at 30°C the colonies of the strain DMA-1 on TSA were cream colored and about 1-3 mm in diameter, circular, smooth, glistening, opaque, and convex with an entire margin. Cells were short-rod shaped, catalase-positive and oxidase-negative. Growth temperature ranged from 20°C and 37°C, optimum growth temperature was 30°C, no growth occurred at 42°C. pH range for growth was 5.2 – 7.5. NaCl was tolerated up to 2%. It was positive for hydrolysis of gelatin, production of hydrogen sulphide. It was negative for casein, starch hydrolysis, indole, urease, methyl red, Voges-Proskauer test and nitrate reduction. Acid was produced from D-glucose, D-dulcitol, and sorbitol but not from salicin and lactose. The G+C content of the genomic DNA was 52.0 mol%. A neighbour-joining tree (Figure 1) based on 16S rRNA gene sequence of the strain DMA-1 shows the phylogenetic relationship among the species of genus *Salmonella* and the organism formed a distinct branch along with *Salmonella enterica* subspecies *salamae* separated from the other members of the genus *Salmonella*.

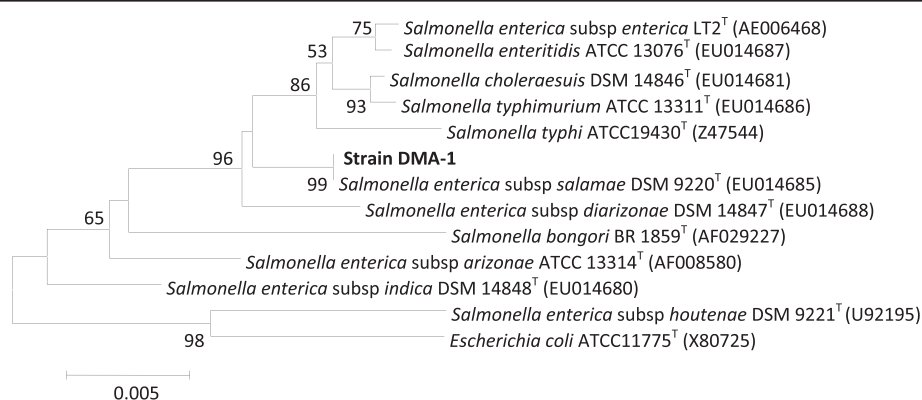
### Initial Findings: Genomic features

The draft genome of *Salmonella enterica* subspecies *salamae* strain DMA-1 composed of 4,826,209 bp with

G+C content of 52.0 mol%, 4,322 predicted CDSs and 69 RNAs. The final assembly contains 32 contigs with N<sub>50</sub> contig length of 4,24,412 bp; the largest contig assembled measured 6,24,758 bp. RAST annotation indicates that *Salmonella enterica* subspecies *enterica* serovar *typhimurium* strain SL 1344 (score 519), *Salmonella enterica* subspecies *enterica* serovar *typhi* Ty2 (score 449), *Salmonella enterica* subspecies *enterica* serovar strain CVM 29188 (score 424) and *Salmonella enterica* (score 416) are the closest neighbors of the strain DMA-1. Summary of the basic characteristic features of the genomes is given in Table 1. The sub-system distribution of the strain DMA-1 is represented in Figure 2. Circular genome map of strain DMA-1 *Salmonella enterica* subspecies *salamae* showing the major genes and their regulators is shown as Figure 3.

### Genes involved in virulence, disease and defense, resistance to antibiotics and toxic compounds and multidrug resistance efflux pumps

Whole genome annotation at RAST server shows that *Salmonella enterica*, subspecies *salamae* strain DMA-1 contains genes related to the virulence, disease, defense and adhesion; mediator of hyperadherence YidE in *Enterobacteria* and its conserved region; 16 kDa heat shock protein A and B, outer membrane lipoprotein YidQ and HTH-type transcriptional regulator YidP. Bacteriocins, ribosomally synthesized antibacterial peptides; colicin V and bacteriocin production cluster; acetyl-coenzyme A carboxyl transferase beta chain (EC 6.4.1.2), amidophosphoribosyltransferase (EC 2.4.2.14), colicin V production protein, DedA protein, DedD protein, dihydrofolate synthase (EC 6.3.2.12), folylpolyglutamate synthase (EC 6.3.2.17) and tRNA pseudouridine synthase A (EC 4.2.1.70). Resistance to antibiotics and toxic compounds; the mdtABCD multidrug resistance cluster, multidrug transporter MdtC, response regulator BaeR,



**Figure 1** Phylogenetic neighbour-joining tree based on 16S rRNA gene sequences showing the relationship between strain DMA-1 and related members of the genus *Salmonella*. *Escherichia coli* (X80725) was used as an out-group. Bootstrap values (expressed as percentages of 100 replications) greater than 50% are given at nodes. Bar 0.005% sequence variation. GenBank accession numbers are given in parentheses.

**Table 1 Characteristic features of the annotated strain DMA-1 *Salmonella enterica*, sub species *salamae***

Nucleotide	Count	Frequency (%)	G+C mol%
Adenine (A)	1,155,424	23.9	52.0
Cytosine (C)	1,265,442	26.2	
Guanine (G)	1,246,212	25.8	
Thymine (T)	1,157,744	24.0	
Any nucleotide (N)	1,387	0.0	
Characters	Length (bp)		
N <sub>75</sub>	2,80,250		
N <sub>50</sub>	4,24,412		
N <sub>25</sub>	5,39,878		
Minimum	1,046		
Maximum	6,24,758		
Average	1,50,819		
Count	32		
Total	4,826,209		

multidrug transporter MdtB, probable RND efflux membrane fusion protein, multidrug transporter MdtD and sensory histidine kinase BaeS. Multiple antibiotic resistance MAR loci; multiple antibiotic resistance protein MaeR, MaeA, MaeB and MaeC. Multidrug resistance efflux pumps; outer membrane lipoprotein NodT family, membrane fusion protein CmeA, outer membrane lipoprotein CmeC, multidrug and toxin extrusion (MATE) family efflux pump YdhE/NorM, macrolide export ATP-binding/permease protein MacB, MacA protein and type I secretion outer membrane protein, TolC precursor.

### Phages and prophages

The following proteins were identified in the genome of strain DMA-1: phage outer membrane lipoprotein Rz1, phage holin, class II, spanin Rz, lytic protein Rz, co-activator of prophage gene expression IbrA and IbrB, tail

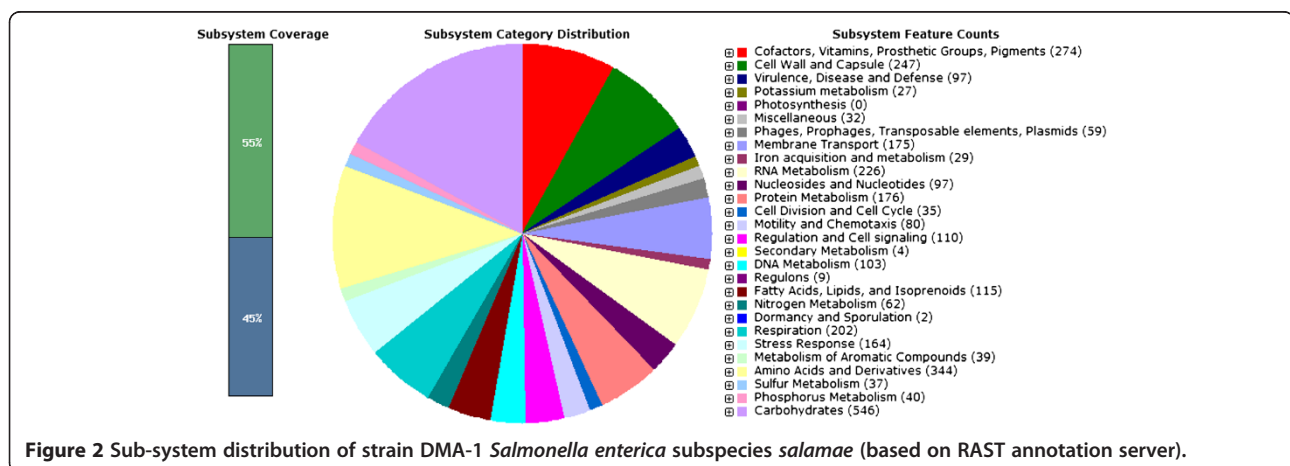
assembly protein, Nin protein, anti-termination protein Q, major capsid protein, capsid scaffolding protein and NinB DNA recombination.

### Functional based differential comparative genomic analysis

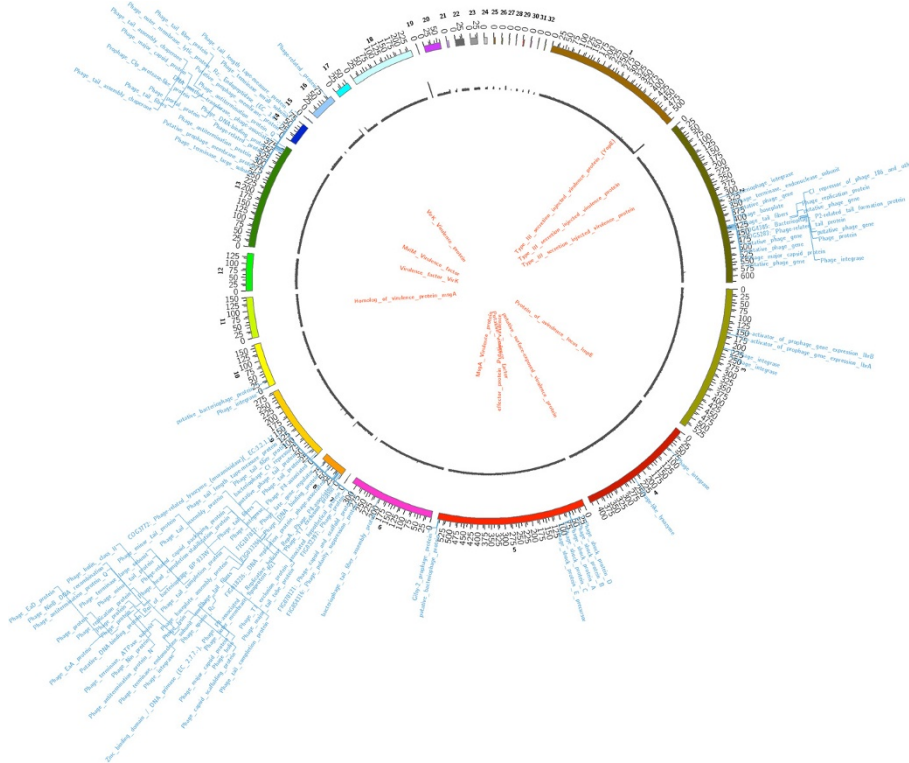
Functional based comparative genomic analysis for strains *Salmonella enterica* subspecies *salamae* DMA-1 and *Salmonella enterica* subspecies *enterica* SL483 were analyzed with the help of RAST (Rapid Annotation using Subsystem Technology) system. We identified a total of 3,437 genes (Additional file 1: Table S1) in which only 45 genes (Additional file 2: Table S2) were different between these two strains, based on their category, subcategory, subsystem and role. Some of the major differences include, the genes for category: virulence disease and defense having subcategory: adhesion, play role as 16 kDa heat shock protein B, mediator of hyperadherence YidE, outer membrane lipoprotein YidE, uncharacterized protein YidR which are present in DMA-1 but absent in *S. enterica* subspecies *enterica*. Similar to this there are genes for category: phages, prophages, transposable elements, plasmids and having subcategory: phages, prophages having role as phage terminase small subunit, phage replication protein which are absent in *S. enterica* subspecies *enterica*.

### Conclusion

It was for the first time, whole genome sequencing of the strain DMA-1, isolated from mouse stool sample was carried out by us and the strain was identified as *Salmonella enterica* sub species *salamae*. Further, the genome sequencing data was subjected to annotation and the analysis revealed the genes responsible for the pathogenesis, virulence, defence, metabolism and other genomic features. The whole genome of *S. enterica* sub species *salamae* comprised of 4,826,209 bp in size with a G + C content of 52.0 mol%, having 4,322 predicted CDSs and 69 RNAs. The final assembly contained 32 contigs of



**Figure 2** Sub-system distribution of strain DMA-1 *Salmonella enterica* subspecies *salamae* (based on RAST annotation server).



**Figure 3 Circular genome map of strain DMA-1 *Salmonella enterica* subspecies *salamae* showing the major genes and their regulators.** The 32 assembled contigs are shown by different coloured ideograms having their base-pair positions depicted at a scale of 1000 units. The coverage of the assembly at each base pair can be seen by the grey coloured track. Annotations descriptors for "virulent" genes [inner label: red] and "phage" related genes [outer label: blue] are mapped onto their respective contig positions. As many of the annotation descriptors occupy neighbouring positions on the contigs, the descriptors are stacked to allow better visualization.

total size 4,826,209 bp with  $N_{50}$  contig length of 4,24,412 bp; the largest contig assembled measured 6,24,758 bp.

#### Future directions

There have been regular reports of *Salmonella enterica* subspecies *salamae* associated infections in Indian sub-continent. Therefore it becomes imperative to study the pathogenicity of the organism and its variants, which are very less explored and understood. The future work focuses on collecting various isolates of *Salmonella enterica* subsp *salamae* pertaining to different geographical locations across India, and to study their genome extensively. Whole genome sequencing of *Salmonella enterica* subspecies *salamae* would help in a deeper understanding of its pathogenicity, which enables us to identify new and improved drug targets for *Salmonella* associated diseases.

#### Ethical clearance

The study was ethically approved by the Institutional Biosafety Committee (Ref/IBSC/2012-2/09) and Institutional Animal Ethics Committee (IAEC 13/01) of the CSIR-Institute of Microbial Technology, Chandigarh, India.

#### Availability of supporting data

This Whole Genome Shotgun project has been deposited at DDBJ/EMBL/GenBank under the accession ATFA00000000. The version described in this paper is the first version, ATFA01000000.

#### Additional files

**Additional file 1: Table S1.** Functional based differential comparative genomic analysis of (1) *Salmonella enterica* subspecies *salamae* strain DMA-1 and (2) *Salmonella enterica* subspecies *enterica* strain SL 483.

**Additional file 2: Table S2.** Functional based (Virulence, Disease and Defense and Phages, Prophages, Transposable elements, Plasmids) differential comparative genomic analysis of (1) *Salmonella enterica* subspecies *salamae* strain DMA-1 and (2) *Salmonella enterica* subspecies *enterica* strain SL 483.

#### Competing interests

The authors have no competing interests.

#### Authors' contributions

Performed experiments: GK, SS, AA, SV and NM. Planned and executed experiments analyzed data and wrote manuscript: JNA and SM. All authors read and approved the final manuscript.

#### Acknowledgments

This work was supported by CSIR net project Human Microbiome (HUM), CSIR-Institute of Microbial Technology, Chandigarh, India. This is IMTECH communication number 08/2014.

Received: 7 March 2014 Accepted: 3 April 2014

Published: 11 April 2014

#### References

1. Kauffmann F, Edwards PR: **Classification and nomenclature of Enterobacteriaceae**. *Int Bull Bacteriol Nomencl Taxon* 1952, **2**:2–8.
2. Le Minor L, Popoff MY: **Request for an Opinion. Designation of *Salmonella enterica* sp. nov., nom. rev., as the type and only species of the genus *Salmonella***. *Int J Syst Bacteriol* 1987, **37**:465–468.
3. Nataro JP, Bopp CA, Fields PI, Kaper JB, Strockbine NA: ***Escherichia*, *Shigella* and *Salmonella***. In *Manuals of clinical microbiology, Volume 1*. 10th edition. Edited by Versalovic J. Washington DC: ASM Press; 2011.
4. Healing TD: ***Salmonella* in rodents: a risk to man?** *CDR (Lond Engl Rev)* 1991, **1**(10):R114–R116.
5. Hensel M: **"Secreted Proteins and Virulence in *Salmonella enterica*"**. *Bacterial Secreted Proteins: Secretory Mechanisms and Role in Pathogenesis*. Caister Academic Press; 2009. ISBN 978-1-904455-42-4.
6. Madigan M, Martinko J, Dunlap P, Clark D: *Brock Biology of Microorganisms*. Pearson Education: San Francisco (CA); 2009.
7. Thorns C, Woodward M: **Fimbriae of *Salmonella***. In *Salmonella in Domestic Animals*. Edited by Wray C, Wray A. New York: CABI Publishing; 2000:35–55.
8. Mahon CR, Manuselis G: **Enterobacteriaceae**. In *Textbook of Diagnostic Microbiology*. Edited by Mahon CR, Manuselis G. Philadelphia: W.B. Saunders; 1995.
9. Giannella RA: ***Salmonella***. In *Medical Microbiology*. 4th edition. Edited by Barron S. Galveston (TX): University of Texas Medical Branch; 1996.
10. Yamamoto S, Kutsukake K: **FljA-Mediated Post transcriptional Control of Phase 1 Flagellin Expression in Flagellar Phase Variation of *Salmonella enterica* Serovar typhimurium**. *J Bacteriol* 2006, **188**(3):958–967.
11. Wain J, House D, Zafar A, Baker S, Nair S, Kidgell C, Bhutta Z, Dougan G, Hasan R: **Vi Antigen Expression in *Salmonella enterica* Serovar Typhi Clinical Isolates from Pakistan**. *J Clin Microbiol* 2005, **43**(3):1158–1165.
12. Peterson J: **Bacterial Pathogenesis**. In *Medical Microbiology*. 4th edition. Edited by Barron S. Galveston (TX): University of Texas Medical Branch; 1996.
13. Jurtschuk P: **Bacterial Metabolism**. In *Medical Microbiology*. 4th edition. Edited by Barron S. Galveston (TX): University of Texas Medical Branch; 1996.
14. Bordignon E, Grote M, Schnelder E: **The maltose ATP-binding cassette Transporter in the 21st century- towards a structure dynamic perspective on its mode of action**. *Mol Microbiol* 2010, **77**(6):1354–1366.
15. Swanson JA, Watts C: **Macropinocytosis**. *Trends Cell Biol* 1995, **5**:424–428. Web. 16 Mar. 2011.
16. McCormick B, Miller S, Carnes D, Madara J: **Transepithelial Signaling to Neutrophils by *Salmonellae*: a novel Virulence Mechanism for Gastroenteritis**. *Infect Immun* 1995, **63**(6):2302–2309.
17. Centers for Disease Control and Prevention: *Salmonella*.; 2011. Web. 16 Mar 2011. Division of Foodborne, Waterborne and Environmental Diseases.
18. Timme RE, Allard M, Luo Y, Strain E, Pettengill J, Li C, Ottesen A, Brown E: **Phylogenetic Diversity of the Enteric Pathogen *Salmonella enterica* sunsp. *enterica* Inferred from Genome-Wide Reference –Free SNP Characters**. *Genome Biol Evol* 2013, **5**(11):2109–2123.
19. Mayilraj S, Saha P, Suresh K, Saini HS: ***Ornithinimicrobium kibberense* sp. nov., isolated from the Himalayas, India**. *Int J Syst Evol Microbiol* 2006, **56**:1657–1661.
20. Singh NK, Raichand R, Kaur I, Kaur C, Pareekh S, Mayilraj S: **Description of a novel bacterium *Exiguobacterium himgiensis* sp. nov., isolated from soil sample collected from the cold desert of The Indian Himalayas**. *Antonie Van Leeuwenhoek* 2013, **103**:789–796.

21. Aziz RK, Bartels D, Best AA, DeJongh M, Disz T, Edwards RA, Formsma K, Gerdes S, Glass EM, Kubal M, Meyer F, Olsen GJ, Olson R, Osterman AL, Overbeek RA, McNeil LK, Paarmann D, Paczian T, Parrello B, Pusch GD, Reich C, Stevens R, Vassieva O, Vonstein V, Wilke A, Zagnitko O: **The RAST Server: rapid annotations using subsystems technology**. *BMC Genomics* 2008, **9**:75.
22. Lagesen K, Hallin P, Rodland EA, Staerfeldt HH, Rognes T, Ussery DW: **RNAmmr: consistent and rapid annotation of ribosomal RNA genes**. *Nucleic Acids Res* 2007, **35**:3100–3108.

doi:10.1186/1757-4749-6-8

**Cite this article as:** Sathyabama et al.: Genome sequencing, annotation and analysis of *Salmonella enterica* sub species *salamae* strain DMA-1. *Gut Pathogens* 2014 **6**:8.

**Submit your next manuscript to BioMed Central and take full advantage of:**

- Convenient online submission
- Thorough peer review
- No space constraints or color figure charges
- Immediate publication on acceptance
- Inclusion in PubMed, CAS, Scopus and Google Scholar
- Research which is freely available for redistribution

Submit your manuscript at  
www.biomedcentral.com/submit

